



SIAS SCHOOL OF INTERWOVEN
ARTS AND SCIENCES
KREA UNIVERSITY

Reimagining learning for the 21st Century & beyond

www.krea.edu.in/sias





“Create a new generation of thinking Indians who will contribute to the development of the globe”

- Dr. Raghuram Rajan

A global benchmark in every way

Krea is a global university pioneering interwoven learning through liberal education. It is the brainchild of a stellar team of academicians, industrialists and intellectuals. Designed with a vision for the 21st century and beyond, Krea is re-imagining learning to enable students to become agile, ethical and purposeful leaders.





“A new paradigm of Interwoven Learning to create relevant, meaningful jobs in the future”

- Kiran Mazumdar-Shaw

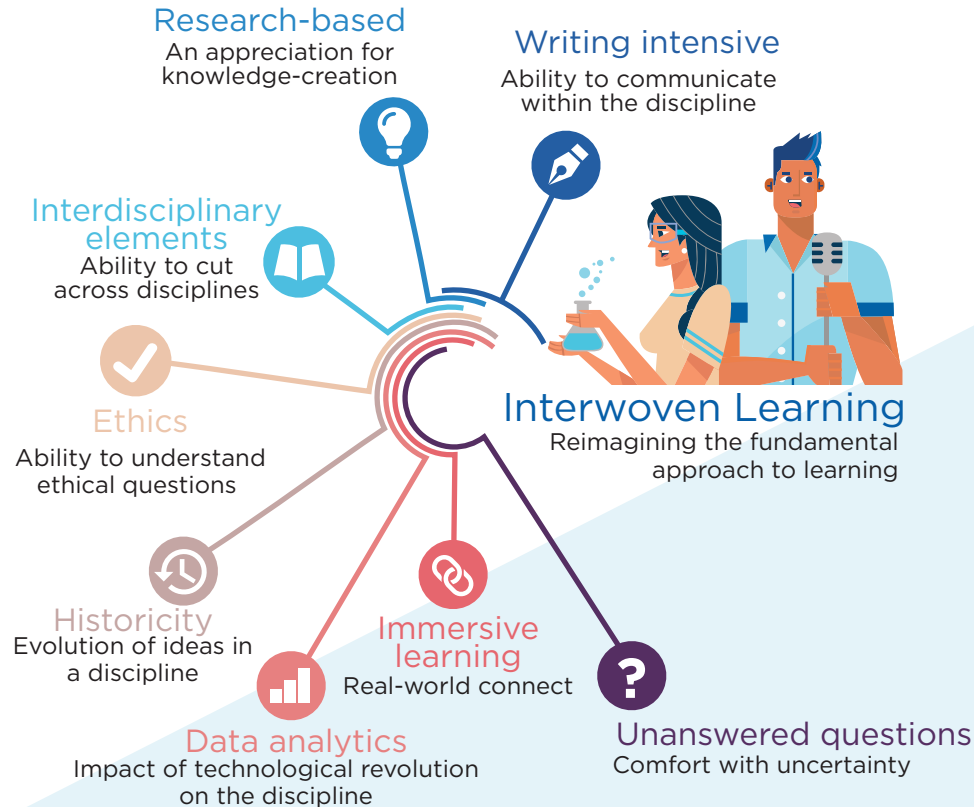
The Krea Factor Interwoven Learning

Our curriculum weaves together the arts and sciences, creativity and action, eastern and western perspectives, drawing upon the profound learnings of the past and present, to ready students for the future.

- Weaving together academics with experiential learning
- Facilitates a unique broad-based learning experience
- Allows students to deep-dive into their specialization
- Creates well-rounded minds that are prepared for a change-driven future



Guiding principles of the curriculum



Undergraduate Programmes School of Interwoven Arts & Sciences (SIAS)

Some of the finest minds in the world have come together to design Krea University's standout undergraduate programmes. Students have strong roots in their chosen concentrations, make connections across disciplines, and also possess requisite skills like data analysis and quantitative reasoning.

The University offers 3-year B.A. (Hons) & B.Sc. (Hons) degrees in a completely residential programme, with an option to pursue an additional fourth year of advanced studies.

B.A. (Hons)

- Arts
- Economics
- History
- Literature
- Politics
- Social Studies

Additional minors:

- Business Studies
- Philosophy

B.Sc. (Hons)

- Biological Sciences
- Chemistry
- Computer Science
- Environmental Studies
- Mathematics
- Physics
- Psychology

Interesting electives to choose from:

International Trade, How to read a Film, Neuroscience, Immunology, Physics, Geochemistry, Statistical, Quantum Computing, Sustainability and many more...

Reimagine and Recreate

Choose from over 150 subject combinations to design your own programme



Centres at Krea



The Centre for Writing and Pedagogy (CWP) is a teaching, training and research centre that offers writing courses and tutoring for students



The Quantitative Support Centre (QSC) at Krea is a resource centre to support the foundational mathematical needs of students

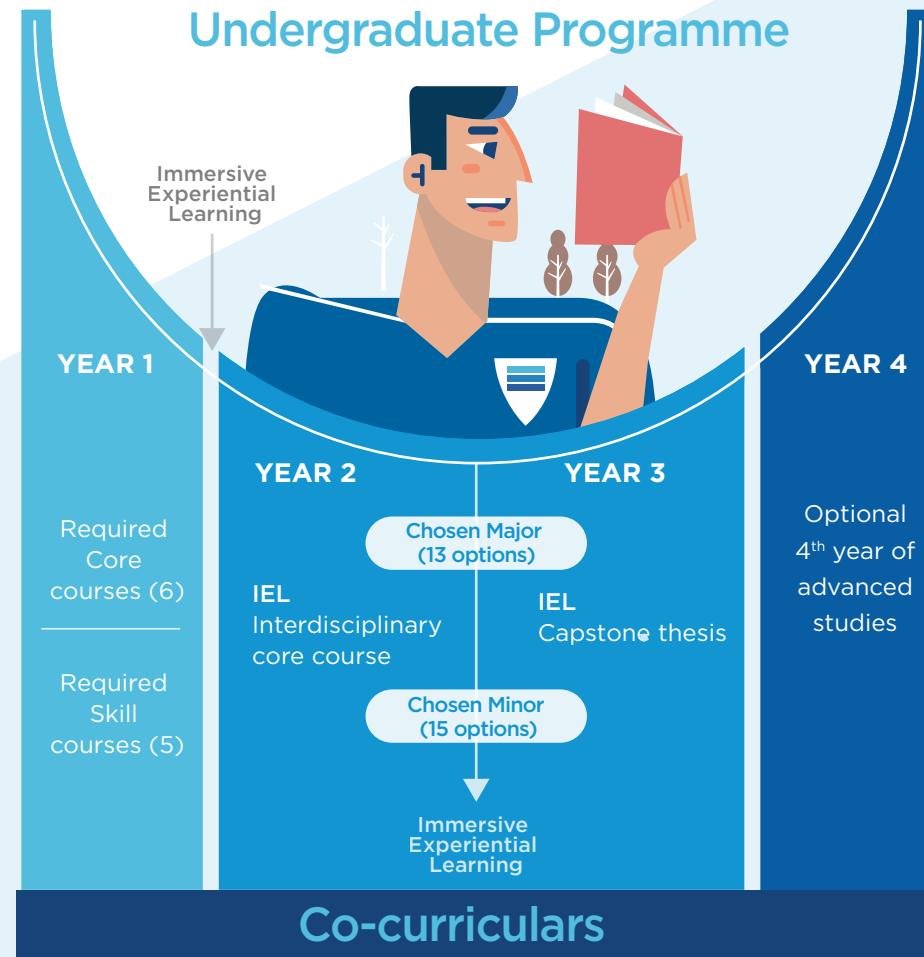


The Media Lab equipped with the latest cameras, lights, microphones and software for still photography, motion picture, computer graphics, 3D graphics, gaming, virtual reality and augmented reality, allows students to explore new media into traditional disciplines



Course Structure

Undergraduate Programme





Learn from the Best

Our illustrious faculty list comprises of some of the finest academic minds from top universities around the world like Oxford, Cambridge, Harvard, IIT, Imperial College, IISc Bangalore and Columbia.

A low student-to-faculty ratio
An engaging and interactive environment



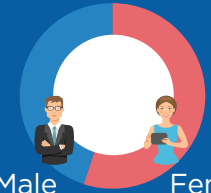


A diverse campus

50+ Cities **18+** States

Extra Curricular Interest & Achievements

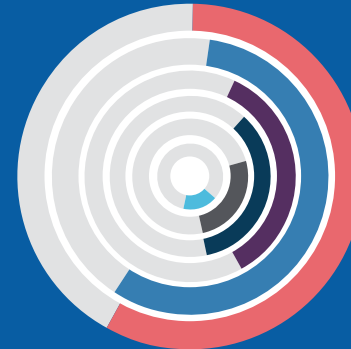
Explore beyond your academic interest with a diversely talented peer group!



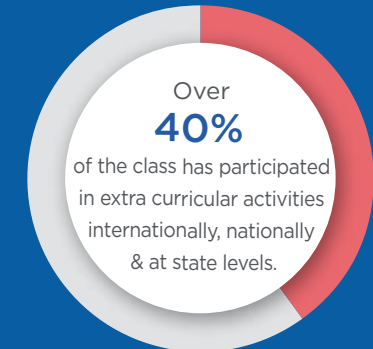
Male
45%

Female
55%

Take a glimpse at the accolades of some of the young scholars of the class of 2022!



- **58%** Sports
- **57%** Performing Arts
- **35%** Debates & Olympiads
- **35%** Literary & Creative Art
- **26%** Community Service
- **17%** Tech & Entrepreneurship



Over
40%
of the class has participated in extra-curricular activities internationally, nationally & at state levels.

Young **entrepreneurs** creating design studios; budding **authors** Publishing books; promising **cricketers** Playing nationally for the U17 team; trained **swimmers** winning medals in international championships



“We will expose our students to immersive learning opportunities, thus narrowing the gap between what students experience in “the real world” and “the classroom world”

- Dr. Sunder Ramaswamy,
Vice Chancellor, Krea University

Partnerships with Purpose

Krea University has well-curated purposeful alliances with a wide range of hyper-local, domestic and international partners offering diverse global opportunities for students.

Competency: Building key competencies that are life-long and transferable

Curriculum: Partnerships that advance academic learning

Career: Enhancing prospects and preparing for the new-age workplace

Community: Contributing to the world around us

Alliances

Our partners are varied and they include national and international academic institutions, centres of excellence, corporate entities, social enterprises, foundations and government organisations such as:



Krea's Guest Lecture series brings leaders and experts from various fields to share their experiences with the student community.

Krea Campus

A state-of-the-art 40-acre campus at Sri City (70 Kms from Chennai), offers students a seamless experience conducive to valuable learning.

- Smart classrooms
- Outdoor Classrooms
- Library
- Student lounges
- Laundry service
- Open Amphitheatre
- Fitness Centre
- Wellness Centre
- Multi Sport Activity areas
- 3 Residential towers equipped with A/C twin-sharing bedrooms



Admissions Process

Rigorous, merit-driven and holistic, Krea's two-stage admissions process is rigorous and aims to understand every aspect of the candidate's profile. It goes beyond scholastic abilities to look for fundamental qualities like open-mindedness, curiosity, communication, collaboration, creativity and self-awareness.

1

Application

- Personal Story
- Academics & co-curricular
- Extra curricular activities

2

Krea Immersion Case Day

- Quantitative and logical reasoning test
- Outdoor Excursion
- Reflective essay
- One on One conversations



2 stage admissions process

Financial Assistance

At Krea, we have a need-blind admissions process and a need-aware financial assistance process that endeavours to support the financial need of a student who wishes to pursue his/her educational aspirations at the University.



Governing Council



N Vaghul
Chancellor & Member



R. Seshasayee
Chairman
Executive-Committee & Member



Anu Aga
Member



Vishakha N. Desai, Ph.D.
Member



Dheeraj G. Hinduja
Member



Anand Mahindra
Member



S Ramadorai
Member



C. Srinivasa Raju
Member



Adithya Mittal
Member



Sunder Ramaswamy, Ph.D.
Vice-Chancellor & Member



Kapil Viswanathan
Vice-Chairman



John W. Etchemendy, Ph.D.
Advisor



Manjul Bhargava, Ph.D.
Member



Sajjan Jindal
Member



Kiran Mazumdar-Shaw
Member



Raghuram G. Rajan, Ph.D.
Advisor



Cyril Shroff
Member



P. R. Venketrama Raja
Member

Academic Council



Sunder Ramaswamy, Ph.D.
Chairman



Manjul Bhargava Ph.D.
R. Brandon Fradd Professor of
Mathematics, Princeton University



Vishakha N. Desai, Ph.D.
Senior Advisor for Global Affairs,
Columbia University



John W. Etchemendy, Ph.D.
Stanford University's 12th Provost &
Patrick Suppes Family Professor in
the School of Humanities & Sciences



Akash Kapur, Ph.D.
Writer and Journalist.
Former Columnist,
International New York Times



T M Krishna
Renowned musician &
public intellectual



Raghuram G. Rajan, Ph.D.
Katherine Dusak Miller Distinguished
Service Professor, Chicago Booth,
23rd Governor of the RBI



Srinath Raghavan, Ph.D.
Senior Fellow,
Centre for Policy Research



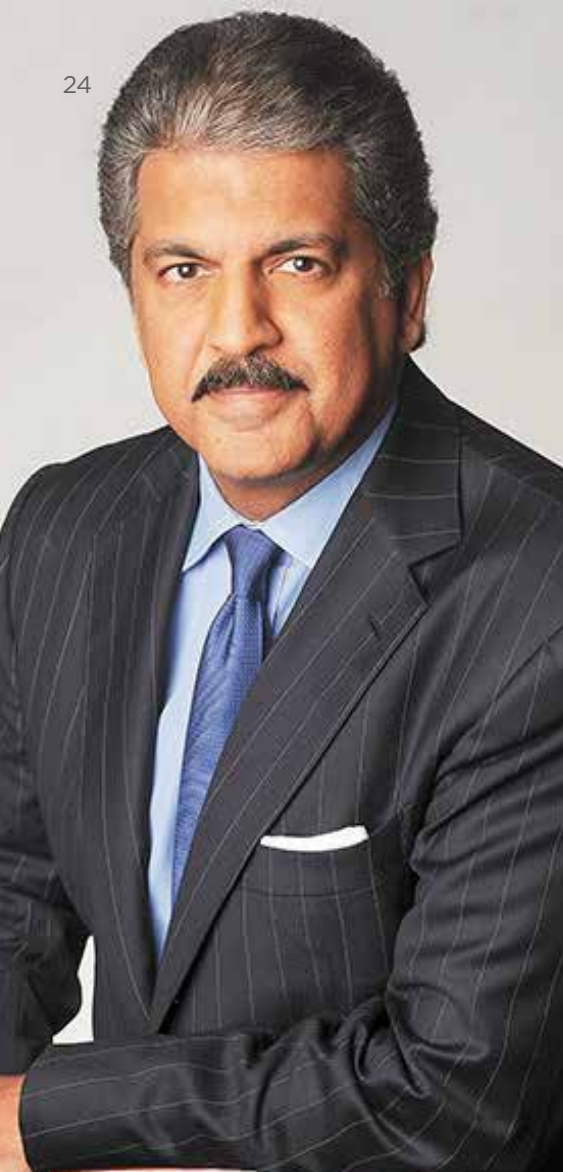
Gaurav Raina, Ph.D.
Faculty, IIT, Madras



Jessica Seddon, Ph.D.
Director of Integrated Urban Strategy
at the World Resources Institute



Tara Thiagarajan, Ph.D.
Chairman and Managing Director,
Madura Microfinance Ltd., Founder &
Chief Scientist at Sapient Labs



“Krea’s graduates will undoubtedly be the most sought after candidates for jobs, both in the corporate world and in other chosen vocation”

- Anand Mahindra

Beyond Krea

Krea students will graduate with a high level of preparedness to pursue a vast number of avenues besides higher studies, appearing for the civil service exams, joining government organisations or the corporate world, working in a non-profit, research or think tank environment, or become an entrepreneur or a performing artist. The world will literally be their stage to perform.







Speak to a Krea admissions counselor at **044-7165 0234**



Admin office: 196, TTK Road, Alwarpet, Chennai, Tamil Nadu 600018
Campus: 5655, Central Express Way, Sri City, Andhra Pradesh 517646
ask@krea.edu.in | www.krea.edu.in/sias