



# PROSPECTUS

• KNOWLEDGE • INNOVATION • OPPORTUNITIES



# **SCHOLARSHIP SCHEME** FOR THE YEAR 2020-21

## **RECOGNITION**

Arni University is a H.P. State Government approved University, established by the Arni University (Establishment & Regulation) Act 2009 (Bill No.23 of 2009), vide Notification No. EDN-A-Ka-(I)-23/2007, Dated 03 Nov.2009.

Arni University has been Notified by UGC under Section 2(f) of UGC ACT,1956 (Notification No. 8-5/2010 9CPP-1/PU), dated 03 March 2010, to confer degrees to its students under Section 22 of UGC Act,1956

## **RESERVATION**

- ★ 25% seats in each course shall be reserved for Bonafide Students of Himachal Pradesh.
- ★ Reservation of seats for admission of students belonging to reserve categories shall be made as per the policy of the Govt. of India/ Himachal Pradesh Government.

**3% Seats for  
Divyang Students.**

**15% Seats for  
Bonafide Students belonging  
to SC Category.**

**7.5% Seats for  
Bonafide Students belonging  
to ST Category**

**10% Seats for  
Bonafide Students belonging  
to BPL/IRDP Category.**



Arni University came into existence by an Act No – 23 of 2009 of Govt of Himachal Pradesh. It has Notified by the UGC vide Notification No – F No 8-5/2010(CPP-1/PU), dated 03 Mar 2010, under Section 2(f) of UGC Act, 1956, with the objective to promote inter-disciplinary higher Education and Research in the needy areas of Himachal Pradesh, Punjab and J & K.

The University is located at Kathgarh, Kangra, in the state of Himachal Pradesh, about 6 Km from the National Highway No 1A (Four Lanes Highway), 30 Km from Pathankot City. The University has one of the most attractive lush green pollution- free Campus, over looking Beas River, in the foothills of Dhauladhar Mountain Ranges.

Arni has a well laid out state-of-the-art infrastructure for Education & Research and presents a spectacle of harmony in architecture and natural beauty. All the educational and research programmes are offered through various Ultra-Modern Departments. The University has elegant well-stocked Library, Multi- purpose Gyms, all Indoor/Outdoor sports facilities, fully Wi-Fi Campus, modern Canteen and well maintained separate Hostels for Boys and Girls.

The University has faculties of Engineering and Technology, Commerce & Management, Computer Science, Basic Sciences, Hospitality, Arts and Humanity. Arni has excellent modern infrastructure, well qualified and dedicated Faculty and congenial, happy environment for academic and intellectual growth. The University also has great Laboratories and facilities to build great Research Centre for the fine students to work with professional approach. The University is following Choice Based Credit System (CBCS).

Arni seeks to provide academic, cultural and social opportunities to enhance the intellectual development of sincere and motivated students. The University focuses on academic prestige, scholarly excellence and intellectual horsepower, laying emphasis in developing knowledge and skills of students for elite academic, scientists and thinkers.



The syllabi are designed to provide students opportunities for research and exploitation in a wide array of course in multiple disciplines as well as interdisciplinary learning experiences. Students accepted in Arni will be engaged in challenging classroom discussions within designated well planned courses and will be introduced to multifarious topics by means of their attendance at seminars, lectures and cultural programmes, both on and off Campus. The experience of peers and the rapport with Faculty members and designated advisors cultivates fine ingredients for a truly rewarding learning experience.

Arni also focuses on overall growth of the students by developing their Soft Skills and meeting their physical intellectual, social and cultural needs. The University has a dedicated Team for development of personalities of students, emphasizing on various important Soft Skills, including Communication Skills and preparation for interviews. It is drilled in the minds of students that Soft Skills are not necessary for a person's professional career, but are even more contributing to one's so called social competence.

The Management is alive to set aside a sizable budget and cater for several resources of funding for operational spending, research and earnings from endowments. The Management thrive in an environment that fosters competitiveness, critical thinking, innovation and creativity by managing resources efficiently and quickly to the demands of a rapidly changing global market.

Overall, the University aims to groom young students to shape into vibrant citizens of the country, capable of taking bigger responsibilities and contribute in every sphere, through their professional competence, inter-cultural understanding and ethics by adopting first-class methodologies to tackle world class problems.

## VISION

To inspire the spirit of esteemed students through outstanding achievements, learning and aspire to be recognized at National and Inter-national levels as an university that imagines and influence the growth and future of the human beings.

## MISSION

- To be the most preferred choice of students, faculty and Industry.
- Create leadership that is assertive, creative efficient and effective.
- Promotion of an inclusive culture of global citizenship.
- Achieve academic excellence.
- To have a strong University- Industry inter-face.



# WHY ARNI UNIVERSITY

Arni is the only University in this location. There is no other University in the surrounding area of about 100 km distance. It must be understood that a University has tremendous numerous advantages over the colleges, which depend upon some other University for various directions, control, conduct of exams, results and issue of certificates.

Students have to visit University offices for many queries and issues which would result in avoidable wastage of money, valuable time and efforts.

- ❖ Has passion to groom leaders who are professionals with high character qualities and ethos and values.
- ❖ Ranked among the top Universities of Himachal Pradesh and the country.
- ❖ World class state-of-the-art infrastructure in terms of Classrooms, Seminar Halls and well stocked Library.
- ❖ Multi-discipline lush green sprawling Campus, spread over 120 acres with an impressive panoramic view of Dhauladhar Mountain Ranges.
- ❖ High Quality educational programmes, delivered by well qualified, reputed and experienced faculty in a friendly and caring multi-cultural environment.
- ❖ Facilities excellent placements in the successful and leading branded industries all over the country and defence/para-military forces.
- ❖ Library and learning resources linked to international Electronic Database.
- ❖ Well equipped Computer and Engineering Labs, furnished with educational technology equipment.
- ❖ Most high-tech WI-FI Campus to help students in latest learning at the time and place of their choosing.
- ❖ A dedicated Team, headed by an Officer, who has vast experience in the industry to develop Personalities and Soft Skills of students to give them the fine chisel and polish required to face various interviews/ placing.
- ❖ Well furnished Hostel facilities for Boys and Girls with almost all indoor and outdoor sports and recreational facilities, including separate Gyms for Boys and Girls to give them feeling of "Home Away from Home".
- ❖ A Health Care Centre to cater for the emergency medical needs of students and staff.
- ❖ A Non- Smoking, Non- ragging and Drug free Campus.
- ❖ Dedicated Transport facilities to most of the surrounding areas.



## MESSAGE FROM THE CHAIRMAN



Universities of higher learning have always played an important role in the social and economic development of nations. With the quantum of human knowledge increasing at a rapid pace, the role of Arni University as centre of learning, teaching, research and excellence has become more critical. Arni takes a holistic view of education and inspires and empowers students through knowledge and skills to partake fully in the economic development of the country.

It is a matter of great honour for me to state that the new Management has taken over the University and we would ensure that Arni University gallops forward with a great speed and emerges as a "Five Star" educational Institution in the country. Everything possible, to include infrastructure, upgrading of equipment, latest books and administrative / welfare facilities would be catered for to excel in the field of education. As the new, yet experienced Management, we have been investing our earnest efforts to take our University to become one of the best universities in the advancement of academic, human capital index, research & innovation.

Guided by this vision, the University has strategically positioned itself to train our students to meet the development needs of the country and the international human resources market. We also feel that it is not only the knowledge or degrees alone that produce good citizens, but also the culture, ethos, values and conducive environment which adds to the leadership skills and personality as much as the knowledge. Accordingly, we have designed and nurtured the learning and teaching process by hiring or partnering with, the best talents / experts available in the country.

It is my proud privilege to formally welcome all fresh students to the Arni University and I hope that they all will be immensely benefitted by joining us. I would like to assure everyone that we are fully dedicated to provide quality accredited career focused education to our students. To achieve this, an immersive curriculum in our University, supported by industry, has been developed to prepare our students pragmatically with an aim to create a 'Centre of Excellence'. I am absolutely determined and clear in my mind that we will achieve our set goals.

We thank everyone for taking interest in our University

**Mr. Vivek Singh**  
Chairman

## MESSAGE FROM THE CEO

ARNI University makes every effort to make its curriculum world class and deliver it in the most effective manner. It constantly scans the developments taking place in the business world and in the society and responds to the same by preparing professional talent that is able to meet the challenges that present themselves.

Its eminent faculty with a commitment and deep sense of service delivers the curriculum very effectively. ARNI University tries its level best to recruit the best faculty, induct them properly and imbibe in them the values and culture that are a must to be able to serve both the students and the industry. Our faculty is also deeply involved in research and consultancy which renders their teaching all the more relevant and abreast of times. Our pedagogy and teaching aids complement the expertise and skills of our faculty. A special word of welcome for our alumni, who have shared a wonderful symbiotic relationship with the University throughout their association: first as students and now as alumni. It fills us with a feeling of humble pride to see them doing so well for themselves in various walks of life in different parts of the world. We hope that their bond with the University, their alma mater goes from strength to strength.

I heartily welcome the students seeking admission in the ARNI University and wish them all the Very best for their successful career and life.



**Dr Manish Kumar**  
CEO

## MESSAGE FROM THE VICE-CHANCELLOR

What I believe is that Youth will become the future leaders. My people at ARNI and I, believe in the tagline "A university by the youth, for the youth".

We believe that education and the educators are the strongest pillars of a society. At ARNI we provide a world class infrastructure that brings students capability and creativity to a great extent. We are working towards the goal that Arni is the "University of Future".

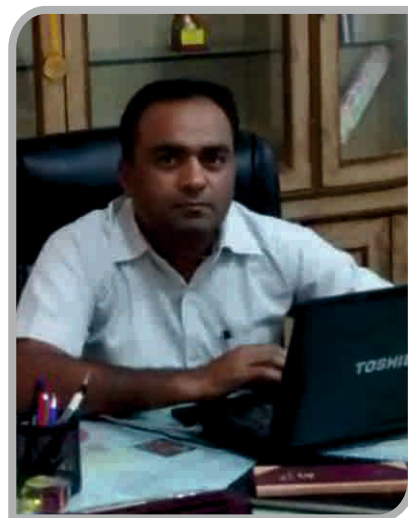
We have an objective of being known for academic excellence and relevant research outcomes. University provides versatile platforms to its students through many courses in Management, Commerce, Technology, Life-Sciences, Pharmacy, Arts and Culture. The different Schools of the University offer a wide range of professional programmes in diverse areas at Under graduate, Post graduate and PhD levels.

For the holistic development of students, the University not only provides a persuading and dynamic environment but a well-equipped library, labs, sports grounds and extracurricular activities etc. to facilitate them. Moreover, we are also transforming these courses to Industrial Fourth Revolution which means an all about data science known as 'Industry 4.0'.

At Arni, we have the most competent faculty, rendering inimitable service involved in the consistent growth of students. We are working on many projects that will prove resourceful for the society. I feel very proud to state that some of our students have invented machines, for instance, solar grass cutters, Solar "Rikshaw" and many other innovations in this line of creations.

It will be my vision and mission to ensure that the university remains a pioneer in realizing strong possibilities for a 360 development of students and fulfil its responsibilities in technical education and research.

I feel it as an honour and privilege to be able to work with a highly committed and dedicated faculty striving towards national as well as global competence and excellence.



**Prof. (Dr.) Sanjeev Dahiya**  
Vice-Chancellor

**JAI HIND ! !**



Engineering and Technology degrees offer the chance to specialize in many of today's most exciting and dynamic fields with career prospects to match. Perhaps the students will study Engineering and Technology and play a role in developing the Micro- technologies of the future, or may be students will choose such streams which would contribute to maintain and improve the technology that keeps modern society running. Technology has turned the world in to a global village and it could be considered a direct consequence of the innovations and studies in the fields of Engineering and Technology.

The Arni School of Technology provides a platform for students to help our modern society through innovative research in technology fields. We have the latest and well equipped Labs and state-of-the-art facilities, along with the highly qualified and experienced faculty to guide our students to become the best professional.

**ARNI SCHOOL OF TECHNOLOGY OFFERS  
Master of Technology (M.Tech.) Programmes in:-**

- ✓ Computer Science Engineering (Seats-18)
- ✓ Electrical & Electronics Engineering (Seats-18)
- ✓ Civil Engineering (Seats-30)
- ✓ Mechanical Engineering (Seats-18)

**Duration: 2 Years (4 Semesters).**

**Eligibility Criteria: M.Tech (1st Year)**

- 50% (General category) marks in BE/ B.Tech in respective discipline along with valid score in GATE/ HPCET(2018).  
OR
- Minimum of 60% marks in BE/ B.Tech. degree awarded by a recognized University.  
(# % marks indicate out of total marks assigned to the examination)





## ARNI SCHOOL OF TECHNOLOGY OFFERS Bachelor of Technology (B.Tech.) programmes in:-

- ✓ Civil Engineering
- ✓ Computer Science Engineering
- ✓ Electrical & Electronics Engineering
- ✓ Mechanical Engineering
- ✓ Electronics and Communication Engineering

**Duration: 4 Years (8 Semesters).**

**\*Eligibility Criteria: B.Tech. (1st Year) for Civil, Mech., ECE, EEE & CSE.**

- 1) 45% marks (General Category) in 10+2 with Physics & Mathematics as compulsory subjects along with one of the Chemistry/ Biotechnology/ Biology/ Technical vocational subject in the above subject taken together from recognized board along with valid score in JEE (Main-2020) entrance Test/ HP-CET(2020).  
OR
- 2) 55% marks (General Category) in 10+2 (PCM) from recognized board

### **B Tech LEET (2nd Year):**

- 3) Passed Diploma examination from AICTE approved Institution with at least 45% marks (General Category) in appropriate branch of Engineering/ Technology.
- 4) Passed B.Sc Degree from a recognized university as defined by UGC, with at least 45% marks (General Category) and passed XII Standard with Mathematics as a subject along with valid score in JEE (Main-2020).
- 5) Provided that in case of students belonging to B.Sc stream, shall clear the subjects of Engineering Graphics/ Engineering Drawing and Engineering Mechanics of the 1st year Engineering Program along with the 2nd Year subjects.
- 6) Provided further that, the students belonging to B.Sc stream, shall be considered only after filling the supernumerary seats in this category with students belonging to the Diploma stream.
- 7) Provided further that students, who have passed Diploma in Engineering & Technology from an AICTE approved Institution or B.Sc Degree from a recognized University as defined by UGC, shall also be eligible for admission to 1st Year Engineering Degree courses subject to vacancies in the 1st Year class in case vacancies at lateral entry are exhausted. However the admission shall be based strictly on the eligibility criteria as mentioned in 3,4,6 & 7 above.

# (Wherein % indicates the marks obtained by a candidate in the entrance test/ 10+2 examination out of the total marks assigned to the entrance test/ examination indicate out of total marks assigned to the examination).



# ARNI School of Computer Science

Information Technology, the convergence of computer and network technology, is a highly transformative discipline. It touches nearly all aspects of our lives: the way we work, learn, communicate, socialise and the way we entertain ourselves. These days, success in any occupational field, be it law, medicine, business, education, entertainment, finance, etc. requires a command of IT. For certain, IT is and will remain the foundation of global economy for years to come. The School provides a balanced, hands-on exploration of the important software and hardware forming the IT field. The courses are taught by the best faculty members having years of IT experience.

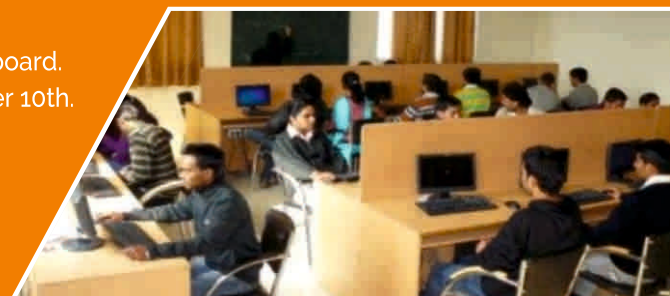
The School has the best state-of-the-art Computing facilities (both hardware and software), in the entire state of Himachal Pradesh and the surrounding areas. The University lays a very special emphasis on ensuring that the students are fully geared up for the technical challenges of an information society. The training programmes of the University are conducted to impart in-depth knowledge in the latest software technology. The School also offers the facility of digital information research in the Library so that the students could access various international research papers and journals.

## **Bachelor in Computer Application (BCA)**

**Duration: 3 Years (6 Semesters).**

### **\*Eligibility Criteria:**

- BCA (1st Year) 45% marks in 10+2 in any stream from recognized board.
- BCA (LEET): Three years Diploma in Engineering (any stream) after 10th.  
OR
- One year Diploma in Computer Application /IT after 10+2.



## **Master in Computer Application (MCA)**

**Duration: 3 Years (6 Semesters).**

### **\*Eligibility Criteria:**

- (1) 50% marks (General Category) in qualifying examination Recognized Bachelor's Degree (3 Years duration) with Mathematics at 10+2 level or at Graduate level along with valid score of HP- CET(2020)  
OR
- (2) 60% marks (General category) in recognized bachelor's degree (3 years duration) with mathematics at 10+2 level or at Graduate level.

### **MCA LEET (2nd Year):**

- (3) 50% marks (General category) in recognized bachelor's degree (3 years duration) in BCA, B.Sc. (IT/Computer Science) with mathematics as a course at 10+2 level or at Graduation level.

(Wherein % indicates the marks obtained by a candidate in the entrance test/ Bachelor degree examination out of the total marks assigned to the entrance test/ examination).



# ARNI School of Basic Science

Science degree gives students the edge in the job market. A degree in any stream of Basic Science could offer students everything they are looking for in a University course – and more. A career as a scientist can be worthwhile, rewarding and challenging. Many scientists feel that they are in the happy position of being able to pursue their favourite subject full time and be paid for it. Many graduates get in such jobs that are directly or indirectly relevant to the field of science. Science opens up great opportunities, unavailable to those studying other subjects.

Science students are also highly employable in a wide range of non-science careers, especially where high levels of numeracy are needed. Even if a person does not want to become a scientist about 60% of graduate job vacancies are non- subject specific, so the possibilities are endless. Finally, it is worth mentioning that Science degrees draw all sorts of competency and offer a varied, challenging course of study for all-rounder.



## **B.Sc. Medical**

**Duration: 3 Years (6 Semesters).**

### **\*Eligibility Criteria:**

45% marks in 10+2 with Physics/ Chemistry/ Biology or equivalent.

## **B.Sc. Non- Medical**

**Duration: 3 Years (6 Semesters).**

### **\*Eligibility Criteria:**

45% marks in 10+2 with Physics/ Chemistry/ Mathematics or equivalent.



## **M.Sc. Botany**

**Duration: 2 Years (4 Semesters).**

### **\*Eligibility Criteria:**

50% marks in B.Sc. Medical/ B.Sc. Honors in Botany or equivalent.

OR

45% aggregate marks in Botany in B.Sc. Medical or equivalent degree.



# ARNI School of Basic Science

## M.Sc. Zoology

Duration: 2 Years (4 Semesters).

**\*Eligibility Criteria:**

50% marks in B.Sc. Medical/ Honors in Zoology or equivalent.

OR

45% aggregate marks in the Zoology as one of subjects in B.Sc. Medical.



## M.Sc. Physics

Duration: 2 Years (4 Semesters).

**\*Eligibility Criteria:**

50% marks in B.Sc. with Physics or equivalent.



## M.Sc. Chemistry

Duration: 2 Years (4 Semesters).

**\*Eligibility Criteria:**

50% marks in B.Sc. with Chemistry or equivalent.



## M.Phil in Chemistry, Physics, Zoology

Duration: 1 Years (2 Semesters).

**\*Eligibility Criteria:**

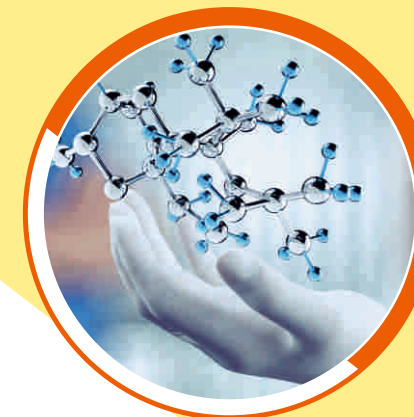
University Entrance Test or as per UGC norms.

## Ph.D. in Chemistry, Physics, Zoology

Duration: 2 Years (4 Semesters).

**\*Eligibility Criteria:**

As per UGC norms



**For M.Phil/ Ph.D separate advertisement shall be released by the University.**



## ARNI School of Commerce & Business Management

Management in business and organization means to coordinate the efforts of people to accomplish goals and objectives, using available resources efficiently and effectively. Management comprises planning, organizing, staffing leading or directing and controlling an organization or initiative to accomplish a goal. In Arni, we focus on essential managerial skills, including accounting, organizational behavior, marketing and strategic Management.

The study of Commerce will prepare students for any career in General Management, Banking, Financial Management, Accounting and Information Systems. Our courses focus on accounting, financial planning, decision making and control of organisations and the students are required to examine the fundamental principles to contemporary business practices. We have the infrastructure and the expert teaching staff who are very learned and renowned in their field of study and research.

With a degree in Commerce from Arni, the students will develop the skills and expertise to play a leading role in the commercial world. We will give our students a thorough understanding of the economy and business, beyond the daily management of an organization. Our programmes offer core units that will introduce students to the key principles of Commerce.

### **Specialization Schemes**

**Dual Specialization.**

**Super Specialization.**

**Major/Minor Specialization.**

### **Fields of Specialization**

**Marketing.**

**Finance.**

**Human Resources Management.**

**International Business.**

**Information Technology.**

**Retail Management.**

**Rural Management.**

**Tourism Management.**

\*So far, Nine MBA batches have Passed out with good Campus Placements.

### **Arni School of Business Management offers Following Programmes:**

#### **Bachelor of Business Administration (BBA)**

##### **\*Eligibility Criteria:**

**Duration: 3 Years( 6 Semesters).**

45% marks in 10+2 in any stream from recognized board.

#### **Master of Business Administration (MBA)**

##### **\*Eligibility Criteria:**

**Duration: 2 Years (4 Semesters).**

(1) Obtained at least 50% marks (General Category) in Recognized Bachelor's Degree along with Valid score of National level test CAT/CMAT or HP-CET(2020)

OR

(2) 60% marks (General Student) Bachelor's Degree from Recognized University.

# (herein % indicates the marks obtained by a candidate in the entrance test/ Bachelor degree examination out of the total marks assigned to the entrance test/examination)

#### **B.Com**

##### **\*Eligibility Criteria:**

**Duration: 3 Years( 6 Semesters).**

45% marks in 10+2 in any stream from recognized board.

#### **M.Com**

##### **\*Eligibility Criteria:**

**Duration: 2 Years( 4 Semesters).**

Bachelor of Commerce (Regular/ Hons/ Professional)/ BBA with at least 45% marks from recognized University.



## ARNI School of Arts and Humanities

The craze of medical and engineering must not be at the cost of vital subjects of Arts, Literature and Philosophy. It is very rare that Philosophy and Social Sciences are taught in our interdisciplinary way except in very few universities; and Arni University is one of them. Arni has an excellent approach in its syllabus, and its students will be unique as practitioners and teachers of literature.

Considering, therefore, the overall aims and objectives of Arni University, the School of Humanities and Social Sciences will not only help students distil and assimilate the knowledge that already exists, but also develop new and deeper insights to add to the stock of existing knowledge.

### ***B.A. (General)/ B.A. (English / Economics) Hons.***

***Duration: 3 Years (6 Semesters).***

***\*Eligibility Criteria:***

10+2 with min. 45% marks.

### ***M.A. (English / Economics)***

***Duration: 2 Years (4 Semesters).***

***\*Eligibility Criteria:***

Minimum of 50% aggregate or an equivalent CGPA in a Bachelor's Degree with English/Economics.





# ARNI SCHOOL of HOSPITALITY & TOURISM

The global Hospitality and Tourism industry and its broader economic impacts currently represent approx. US \$ 8 trillion or 9 % of global economy, employing well over a quarter of a billion people. Myriad issues and challenges surround this dynamic industry where service provision and innovation sit at the heart of success.

Studying Hospitality and Tourism at Arni will equip our students with the skills necessary to manage such diverse operations as hotels, resorts, cruise ships, airlines, and tour operators, destination management, exhibition and conference operations, outdoor centres, schools and hospitals. Our degree confers the national standards in respect of Hospitality and Tourism Management education programmes that are relevant to the needs of industry and which meet accepted Institute of Hospitality international benchmark criteria. In addition, we also provide a respected quality standard that is appreciated worldwide and confers unique benefits to the successful organization.

## Bachelor of Hotel Management and Catering Technology

### **BHMCT**

**Duration: 4 Years (8 Semesters).**

**\*Eligibility Criteria:** (1st Year) 45% marks in 10+2 in any stream from recognized board.

### **Bachelor of Hotel Management and Catering Technology (BHMCT) LEET**

**Duration: 3 Years (6 Semesters).**

**\*Eligibility Criteria:** (2nd Year) 3 years diploma in Hotel Management or equivalent with at least 45% marks from recognized board.

**Course Details:** Our Hospitality Management degree programme is designed to develop effective and innovative Managers for the hospitality industry. The programme offers vocationally relevant and academically rigorous curricula.

**Program Profile:** The School has five Labs, viz. Restaurant, Kitchen, Bakery, Housekeeping and Front office Labs with the aim to enable students to work in such industries with great confidence.

5% relaxation in marks to reserved category students (SC/ST).



# **ARNI SCHOOL of PHARMACY**

In the recent times, the Pharmacy profession has shown tremendous growth. The profession is bound to gain momentum in the coming times. The pharmacists help the patients in their wellness. Pharmacists practice in nearly all areas and specialties in healthcare, though many a times behind the scenes as a medication expert on the healthcare team. Pharmacist's responsibilities include a range of care for patients, from dispensing medications to monitoring patient health and progress to optimize their response to medication therapies. Pharmacists also educate patients on the use of prescriptions and over-the-counter medications, as well as provide population based care in institutional settings. They ensure drug purity and strength and make sure that drugs do not result in a harmful way.

Arni School of Pharmacy offers two years full time Diploma course in Pharmacy, approved by Pharmacy Council of India, New Delhi. After passing the course, the students are eligible for the job of a Pharmacist and may also adopt self-employment. The eligibility and admission criteria to the Diploma in Pharmacy is as under:

- ✓ Passed 10+2 examination with Physics & Chemistry as compulsory subjects along with one of the Mathematics /Biology (Botany/ Zoology)
- ✓ The Admission will be done strictly on the basis of merit, based on the marks obtained by the students in 10+2 class.



## ARNI School of Journalism & Mass Communication

The BJMC course offered by ARNI University is a three years degree programme and was renamed as Bachelor of Arts in Journalism and Mass Communication (BA JMC), a choice based credit system as per guidelines of UGC in 2016. The course is aimed at inculcating journalistic skills within the students, while also helping them in proving their worth in the industry with the help of some top-notch industry-setting facilities like its in the Community Radio Station, Print Journalism Lab, a Mass Communication Studio, Wi-Fi-enabled corridors, and classrooms with smart board facility to name a few. In addition to this, we at Arni, are doing every bit we can to make learning for students effective and long-lasting.

The Journalism & Mass Communication program at Arni is a perfect mixture of practical exposure and leadership, besides aiming at making the students familiar with the trends of the media industry. Every summer, students enrolled in the program are required to do internships in the leading media companies for maximum exposure and practical knowledge and upon the completion of the course, the students are rewarded with placement opportunities in numerous media organizations hence, making us the sole university in region with the best placements.



### **BJMC (Journalism & Mass Communication)**

**Duration: 3 Years (6 Semesters).**

**\*Eligibility Criteria:**

10+2 with min. 45% marks.

## ARNI School of Veterinary Sciences

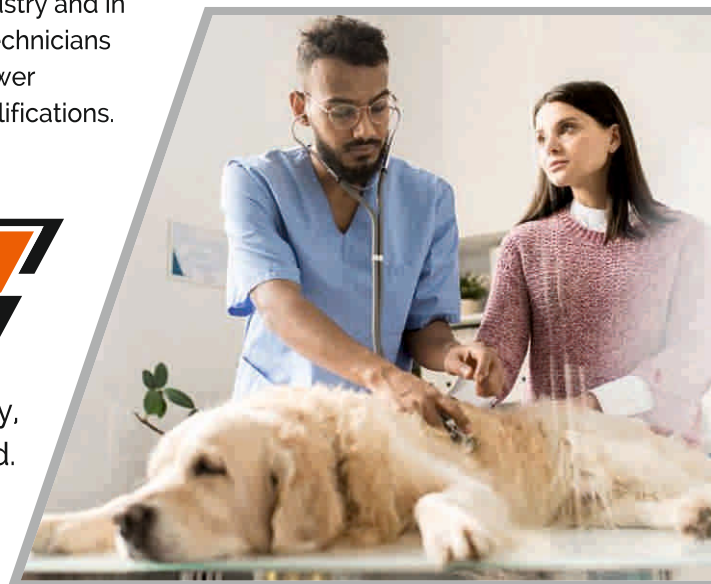
Diploma in Veterinary Pharmacy is a Diploma level Veterinary Science course. Veterinary pharmacy belongs to the field of veterinary medicine. This qualification is primarily intended for pharmacists involved or wishing to develop an involvement in the animal health industry and in the supply and use of animal medicinal products. Pharmacy technicians or other pharmacy staff may study the taught modules at a lower academic level which would incorporate appropriate SQP qualifications.

### **Diploma in Veterinary Pharmacist**

**Duration: 2 Years (4 Semesters).**

**\*Eligibility Criteria:**

10+2 or its equivalent exam with Physics, Chemistry, Biology and Mathematics from a recognized board.







## **ACADEMIC BLOCKS**

The University has an extremely well designed infrastructure of eight Academic Blocks and very well equipped state-of-the-art Laboratories, to inspire students to learn their lessons in a very congenial environment. The classrooms have all modern learning aids/ comforts to activate all senses of the students and make them learning savvy. The classrooms and Seminar Halls are also equipped with the latest teaching aids and presentation tools.

## **LIBRARY**

The University Library has been up-graded to the Best Library in the state of Himachal Pradesh and in the entire surrounding areas. It has now approx. 18500 books of different streams, has facilities of e-journals and is fully air-conditioned to provide ideal environment for the students. The Library has a large number of national and international journals in the field of Management, Technology Science and Arts.



## **LABORATORIES**

The University has the best modern and state-of-the-art Labs to cater for the latest practical training of Science and Engineering students. We have the best Computer and Operating systems and software. We aim and ensure that when our students pass out from the University, they are fully geared up to display their knowledge and skills to the world outside.



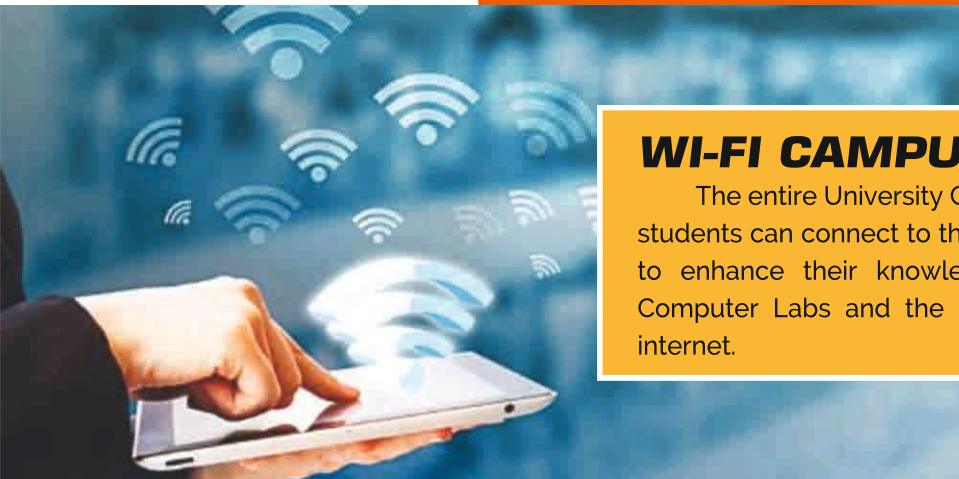
## **MEDICAL FACILITIES**

Arni has to bedded "Central Medical Clinic" with trained medical staff and Ambulance. We also have adequate stock of all important medicines, necessary latest equipment required to take immediate medical care of our students, staff and the faculty. In addition, "First Aid Boxes" have been provided in all Hostels and public transport. Tie up with civil Hospitals has been done to meet any emergency.



## **WI-FI CAMPUS**

The entire University Campus is covered by a WI-FI system where students can connect to the Internet and have their freedom of action to enhance their knowledge. The non-programming Labs, other Computer Labs and the Digital Library are also connected to the internet.



## **BANKING/ ATM FACILITIES**

The University has a Banking/ATM facilities available within the Campus. The facilities are being provided by the Punjab National Bank. This enables everyone to have all financial transactions in the University at their own convenience. It also helps students/ University to deposit their fee/ other misc charges easily.





# INFRASTRUCTURE AND FACILITIES

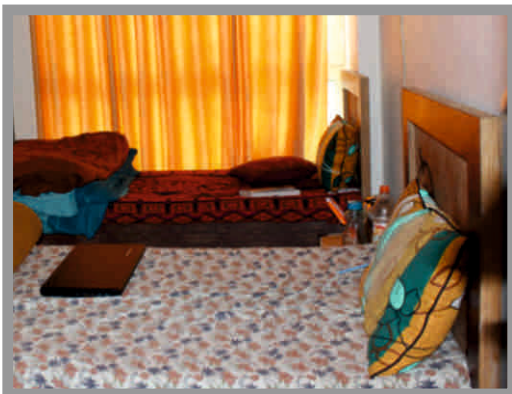
The University thinks about the all round emotional and physical development of its students. With a view to look into these very important aspects. The University has almost all indoor and outdoor sports facilities for the students, including fully equipped gyms, within the Campus. Also, we have instructors of national fame to guide students in an appropriate manner. The University also has a well established Cricket Academy to train students.



## SPORTS

### THE SPORTS FACILITIES ARE :

- ❖ CRICKET
- ❖ TABLE TENNIS
- ❖ HOCKEY
- ❖ BASKETBALL
- ❖ KHO-KHO
- ❖ LAWN TENNIS
- ❖ VOLLEYBALL
- ❖ FOOTBALLS
- ❖ BADMINTON



### HOSTEL

There are separate Hostels for Boys and Girls with all the modern and comfort facilities. The rooms are well furnished spacious and airy to enable the living of students as comfortable as possible. In fact, it is with a concept to have " Home away from Home". We cater for approx. 900 students on double and triple sharing basis. We pay special attention for the safety and comforts of the students, especially the Girl students, so that they all feel secured, comfortable and confident. The admission in the Hostel cannot be withdrawn before one academic semester.

### STUDENTS' MESS

The University has two separate large Dining Halls for the Boys and Girls hostellers, connected with their Hostels, to ensure their better time management and security. The menu is decided by the Mess Committee, comprising of University authorities and Hosteller student members/ The Mess charges are paid in advance for whole Semester, in the beginning of each semester.





## INFRASTRUCTURE AND FACILITIES

The University caters for a "Pick up from Home" facility for our students from all the surrounding areas of Himachal Pradesh, Punjab and J & K. Transport charges are required to be paid in full, in advance, in the beginning for the whole Semester. Charges once paid cannot be withdrawn on any reason. The areas connected are:

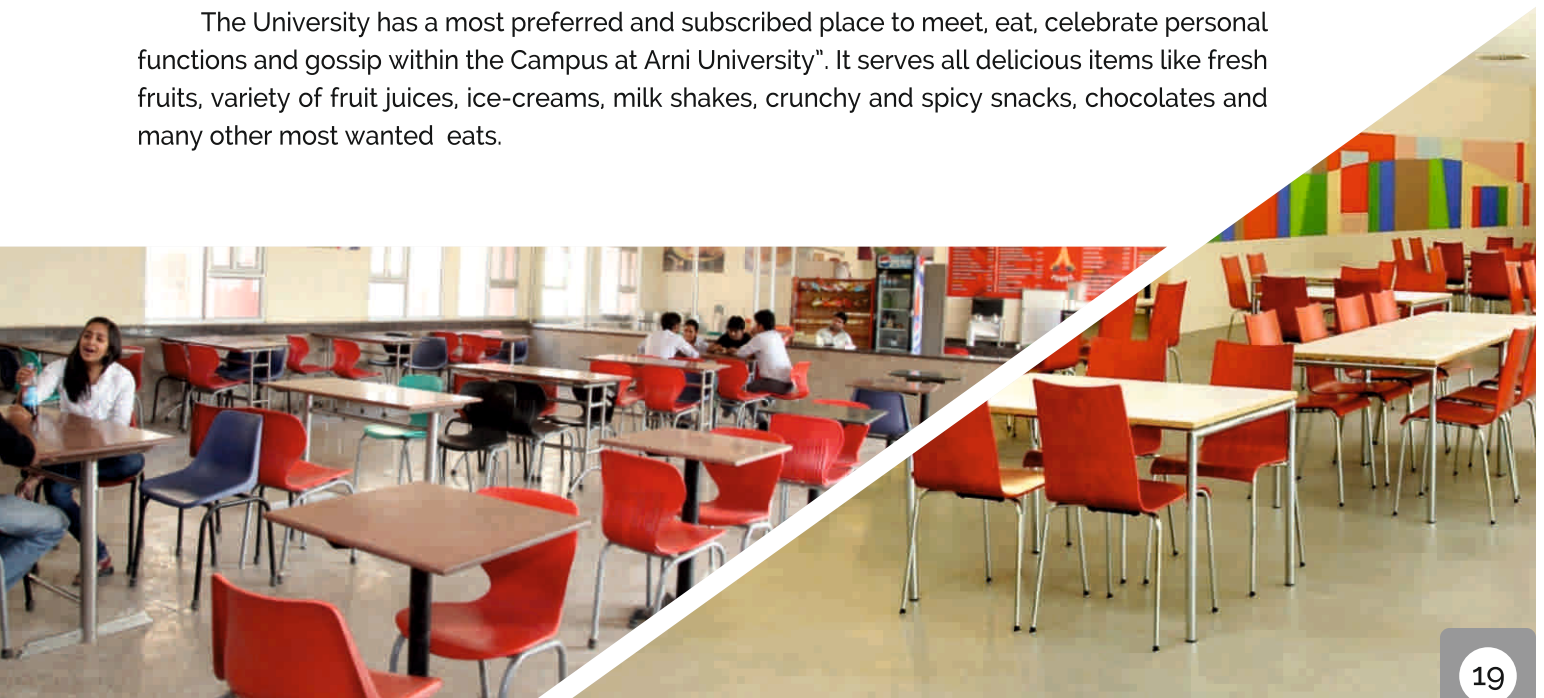
- ❖ Talwara – Mukerian- Arni
- ❖ Gurudaspur – Dinanager – Mirthal – Arni
- ❖ Jugial – Pathankot – Arni
- ❖ Bhadwar – Nurpur – Arni
- ❖ Jawali – Indora- Arni
- ❖ Badukhar – Indora – Arni
- ❖ Talwara – Mukerian- Arni
- ❖ Gurudaspur – Dinanager – Mirthal – Arni
- ❖ Jugial – Pathankot – Arni
- ❖ Bhadwar – Nurpur – Arni
- ❖ Jawali – Indora- Arni
- ❖ Badukhar – Indora – Arni

### TRANSPORT FACILITIES



## CAFETERIA

The University has a most preferred and subscribed place to meet, eat, celebrate personal functions and gossip within the Campus at Arni University". It serves all delicious items like fresh fruits, variety of fruit juices, ice-creams, milk shakes, crunchy and spicy snacks, chocolates and many other most wanted eats.





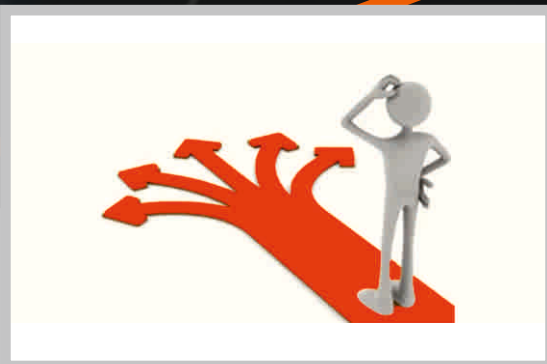
## CENTRE FOR CORPORATE RELATIONS & PLACEMENT CELL

Placements are on top of the mind in any management and/or technical education institute, for all. As a result, the entire range of academic activities is oriented to provide the best possible placement or job opportunity to the students in leading corporate houses/MNCs in Delhi-NCR as well as in other parts of India and overseas. Arni boasts of a dedicated Centre for Corporate Relations (CCR) Team for enhancing the exposure of the students to the corporate world, at all levels and to act as an interface between the institute and the industry.

As future business leaders, students need to be well informed about the various developments taking place in the corporate world as also about the socio-political and legal environment, both domestic and international. While fierce competition is the driving force for creativity and innovation, knowledge, skills and vision constitute an important ingredient for becoming an effective leader.

The education and training at Arni is intended to be a life-changing experience and one that shapes the professional identity of its students apart from influencing their thinking in a positive manner for the rest of their lives.

The students at any management or a technical education institute are expected to gear themselves up and be proactive to deal with dynamic changes and challenges that lie ahead of them. Arni, in turn, assists its students in developing a broad corporate perspective to enable them to integrate and coordinate actions across functional and organizational boundaries. The curriculum for all the courses offered by the institute has been prepared after due deliberation with leading repute.



# ARNI UNIVERSITY

## PROMINENT INDUSTRIES / COMPANIES WHO VISITED THE UNIVERSITY RECENTLY



## INDUSTRIAL TRAINING & PLACEMENT PARTNER MULTIMEDIA & ANIMATION



In the last 12 years OXL has produced full length feature Films Sadda Haq, Mini Punjab, Yodha Awards more than 1000 Ad Films. Corporate Films, Animated a full song in a full length Feature Film and other Multimedia Projects.



### EXPERTISE:-

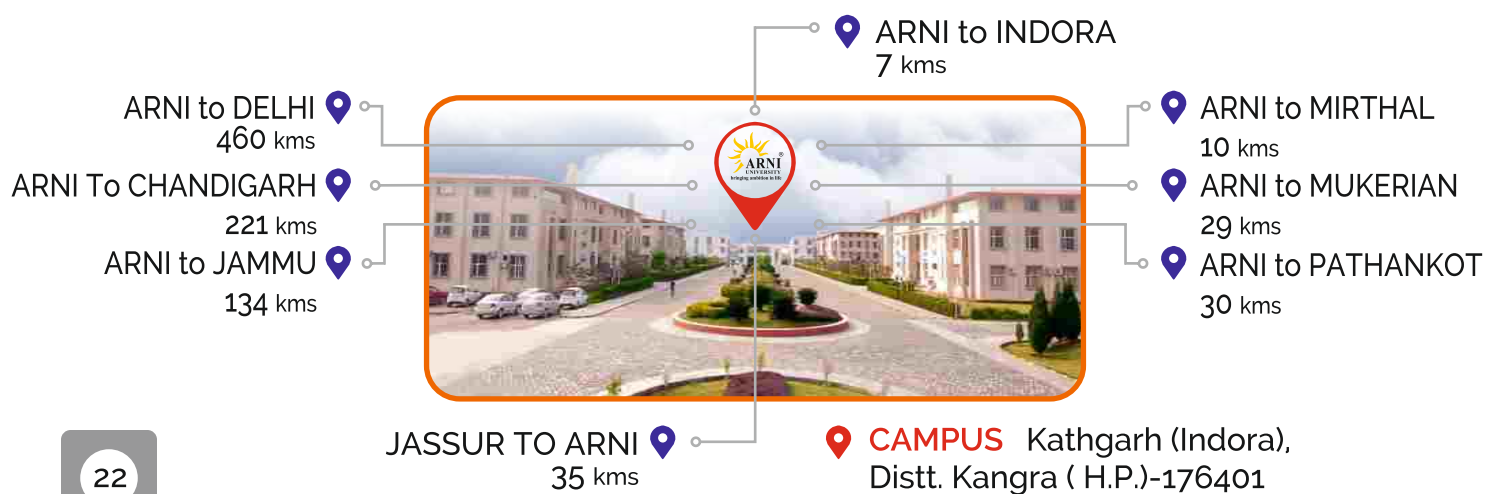
- Graphics & Web Designing
- Editing & VFX
- 2D / 3D Animation
- Camera & Direction
- OXL is run and managed by professionals of film Industry.
- OXL is associated with pure Design Solution, OXLUGA and OXL Films.
- OXL has managed Special Guest Lectures, Seminars and Brain Storming Sessions.



## ARNI UNIVERSITY LIFE & EVENT



## HOW TO REACH US





## FEE STRUCTURE (PER SEMESTER)

Sr. No.	Name of Course	Tuition Fee (Per Sem)
1.	M.Tech CSE (Full Time)	Rs. 42500/-
2.	M.Tech Mech (Full Time)	Rs. 42500/-
3.	M.Tech Civil (Full Time)	Rs. 42500/-
4.	M.Tech. EEE (Full Time)	Rs. 42500/-
5.	B.Tech Civil Engg.	Rs. 52500/-
6.	B.Tech Mechanical Engg.	Rs. 52500/-
7.	B.Tech ECE	Rs. 52500/-
8.	B.Tech EEE	Rs. 52500/-
9.	B.Tech CSE	Rs. 52500/-
10.	MBA	Rs. 52500/-
11.	BBA	Rs. 22500/-
12.	BHMCT	Rs. 32500/-
13.	MCA	Rs. 42500/-
14.	BCA	Rs. 22500/-
15.	B.Com	Rs. 10000/-
16.	B.Sc Non-Medical	Rs. 12500/-
17.	B.Sc Medical	Rs. 12500/-
18.	M.Sc Chemistry	Rs. 30000/-
19.	M.Sc Physics	Rs. 30000/-
20.	M.Sc Botany	Rs. 30000/-
21.	M.Sc Zoology	Rs. 30000/-
22.	B.A. (Gen./English/Eco.)	Rs. 10000/-
23.	M.A. (English/Economics)	Rs. 12500/-
24.	M. Com	Rs. 15000/-
25.	D. Pharmacy (per annum)	Rs. 105000/-

# Note: Tuition Fees for session 2020-21 is as per the notification of Dept of Higher Educ, Govt. of HP.

### NOTE:

1. Rupees Two Thousand will be paid as "Caution Money" (one time payment) at the time of admission.
2. 1% RCF on Tuition Fees as per the directions of HP Pvt. Institution Regulatory Commission.
3. Tuition fee & Hostel, Mess and Transport charges for each semester to be paid in advance by all students (within 15 days of commencement of semester).
4. As per HP-PERC orders Rs. 50/- per day shall be charged as late fee fine.

Following is the Policy for remittance and refund of fee.

(Vide UGC letter no. D.O. No.1-3/2007(CPP-11)  
Dated: 6th Dec. 2016

Sr. No.	Percentage of Refund of Aggregate fees*	Point of time when notice of withdrawal of admission is served to HEI.
1.	100% (10% deduction as Processing Charges)	15 days before the formally noticed last date of admission.
2.	80%	Not more than 15 days after the formally noticed last date of admission.
3.	50%	More than 15 days but less than 30 days after formally noticed last date of admission.
4.	0%	More than 30 days after formally noticed last date of admission.

\*(Inclusive of course fees and non-tuition fees but exclusive of caution money and security deposit)

Hostel Rent (Per Semester)	Rs. 9000/- Triple Seater	Rs. 12000/- Double Seater	Rs. 15000/- Single Seater
Hostel Security (One Time)	Rs. 5000/-		
Mess (Per Semester)	Rs. 16,500/-		

**SCHOLARSHIP's WORTH**  
**RS. 3 CRORE**  
**FOR**  
**NEEDY & MERITORIOUS**  
**STUDENT's**

\*Condition Apply.

Post Matric Scholarship Scheme for SC/ST Students of Punjab & Himachal Pradesh as per central Govt Rules.

\* Any admission violation of prescribed norms shall be invalid & will attract provisions contained in HP-PERC act 2010 & rules framed there under.

## **Student Discipline**

Students enrolled in the University must recognize their responsibilities towards the faculty, office staff and fellow students. Failure to maintain appropriate standards of conduct will attract disciplinary action.

The University believes that duty, decorum and discipline are the hallmarks of a good student. Students with such qualities alone can prove to be productive manpower with an appreciable value system. Therefore erring students would be subjected to certain disciplinary code. The following acts, would be deemed to be acts of indiscipline: any overt or covert act leading to ragging and eve teasing, disruption of class room activities or disturbing the studies of other students or marring the operations of the University or its educational activities or harming the health or safety of staff or students or damaging the property or possession of any intoxicants or illicit drugs or weapons in the University campus, misconduct during examination, production of false information or documents for admission purpose and the failure to return loaned materials or settle debts with the Arunachal University of Studies.

## **Prohibition of Ragging**

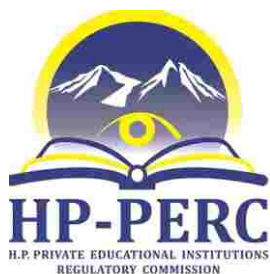
Ragging in any form is strictly prohibited. If any incident of ragging comes to the notice, the authority would expel the student from the University.

The University will not show any leniency to a misbehaving student and would initiate disciplinary action whenever occasion demands. At the time of admission, every student and his/her parent/guardian shall be required to sign a declaration to the effect that he/she submits himself/herself to the disciplinary jurisdiction of the Vice-Chancellor and the other authorities of the University.

All powers relating to discipline among the students are vested with the Vice-Chancellor. The Vice-Chancellor may delegate all or any of his/her powers as he/she deems proper to any of the Officers of the University specified by him/her. The Vice-Chancellor's decision shall be final in all matters of discipline of the students.

## **Specific Rules for Student Discipline**

1. Students are expected to use only courteous and polite language and behave with decorum with others including the faculty members and the staff.
2. Students shall avoid using any insulting, inciting, threatening and explicit language when talking with fellow students and should abstain themselves from violence.
3. Students shall not talk or act in any manner that would bring disrepute to the University.
4. The students shall be regular and punctual in attending classes and all activities connected with the University. Attendance of minimum 75% compulsory for appearing in the examinations.
5. Gathering in groups at roads, entrance, exit and pathways is strictly prohibited.
6. The students shall maintain discipline in the class irrespective of the presence or absence of the teachers.
7. No student is permitted to leave the classroom during class hours.
8. Students should not leave the class or attend it late under the pretext of paying fees, visiting the library etc.
9. Students are expected to read notices/circulars displayed on the University Notice Board. Ignorance of not reading any notice/circular thus displayed shall not be accepted as an excuse failing to comply with the directions contained in it.
10. All vehicles should be parked in the allotted place. Vehicles found parked in unauthorized places shall be impounded.
11. While attending University functions, the students will conduct themselves in such a way as to bring credit to themselves and to the institution.
12. Spitting, consumption of alcoholic beverages, smoking and littering inside the University campus is strictly prohibited.
13. Students are forbidden from entering the University office and the staff rooms during unspecified hours.
14. Students are prohibited from damaging the building or any other property of the University in any way. The cost of any damage shall be recovered from the responsible student(s).
15. Representation of complaints and grievances may be made individually to the Director (Admin) through the concerned H.O.D. or Discipline-cum-Grievance Committee / Proctorial Committee.
16. No meeting/function of any kind shall be held in the University premises without the written permission of the Vice-Chancellor.



## **HP PRIVATE EDUCATIONAL INSTITUTIONS REGULATORY COMMISSION (HP-PERC)**

**HAPPY NEST BUILDING, BELOW BCS, KAGNADHAR, NEW SHIMLA- 171009**

**TEL. 0177-2673664, TELE FAX+91-177-2673663**

**EMAIL-secy-perc-hp@nc.in WEBSITE: <http://hp.gov.in/hpperc>**

### **NOTICE**

It is mandatory under the HIMACHAL PRADESH PRIVATE EDUCATIONAL INSTITUTIONS ( REGULATORY COMMISSION) ACT, 2010 that all the Private Higher Educational Institutions including Universities & Colleges in the State shall offer approved courses, make admissions on merit, charge fees as approved by the State Govt. conduct fair examination/ evaluation and adhere to the relevant regulatory body norms regarding faculty and infrastructure.

Any **violation of the norms** by the private educational Institutions **will attract penal provisions** under section 11 of the Act *ibid*.

For **grievances/ complaints** concerning ay academic or administrative lapse (s), such as overcharging of fees, admission in contravention of norms, malpractices in teaching and examinations, and deficiencies in faculty and infrastructure please contact the **Secretary/Public Grievance Officer, HP-PERC** at the above address through email/fax/by post along with relevant supporting documents, if any, for taking necessary action.

Helpline No	0177-2673664
Email	<a href="mailto:secy-perc-hp@nic.in">secy-perc-hp@nic.in</a> ; <a href="mailto:regulation-perc-hp@nic.in">regulation-perc-hp@nic.in</a>
Tele Fax	0177-2673663

**BY ORDER  
CHAIRMAN**





# ARNI UNIVERSITY

CAMPUS : Kathgarh (Indora), Distt. Kangra ( H.P.)-176401

Helpline No. : 74-0908-5555, 74-0908-6666

[www.arni.in](http://www.arni.in) | Email: [info@arni.in](mailto:info@arni.in)