



Sir Padampat Singhania University
Udaipur

www.spsu.ac.in



Prospectus
(2020 - 21)

**Building a Tradition of
Innovation**

Content

1. Vision and Mission	01
2. Founder Chairperson's Message	02
3. Programmes	03
⇒ School of Engineering	03-10
> B. Tech Degree Programmes	04
○ Biotechnology	04
○ Civil Engineering	05
○ Computer Science & Engineering	06
○ CSE – Artificial Intelligence & Machine Learning	06
○ CSE - Cloud Technology & Information Security	06
○ Electronics & Communication Engineering	07
○ ECE – Internet of Things	07
○ Electrical Engineering	08
○ Mechanical Engineering	09
○ ME - Rail Transportation	09
○ ME – Automation & Robotics	09
○ Mining Engineering	10
> Master Degree Programmes	011-13
> PhD Programmes	14
⇒ School of Management	14-19
> Bachelor's degree Programmes	16
○ Bachelor of Business Administration	16
○ Bachelor of Commerce	17
> Master of Business Administration	18
> PhD Programmes	19
4. International Academic Collaboration	20-21
⇒ University of Nebraska at Omaha, USA	20
⇒ Chiba University of Commerce, Japan	20
⇒ Lincoln University, USA	21
5. Industrial Collaboration	22-23
⇒ Hitachi Rail Systems, Japan	22
⇒ Reliance Jio Centre of Excellence	22
⇒ Electric Vehicle Centre of Excellence	23
⇒ CISCO, India	23
6. About SPSU	24-30
⇒ Faculty	25
⇒ Infrastructure	26-28
⇒ Facilities	29
⇒ Business Incubator	30
7. Training and Placements	31-32
8. SPSU Alumni	33-34
9. Campus Life	35-36
10. Location and Accessibility	37

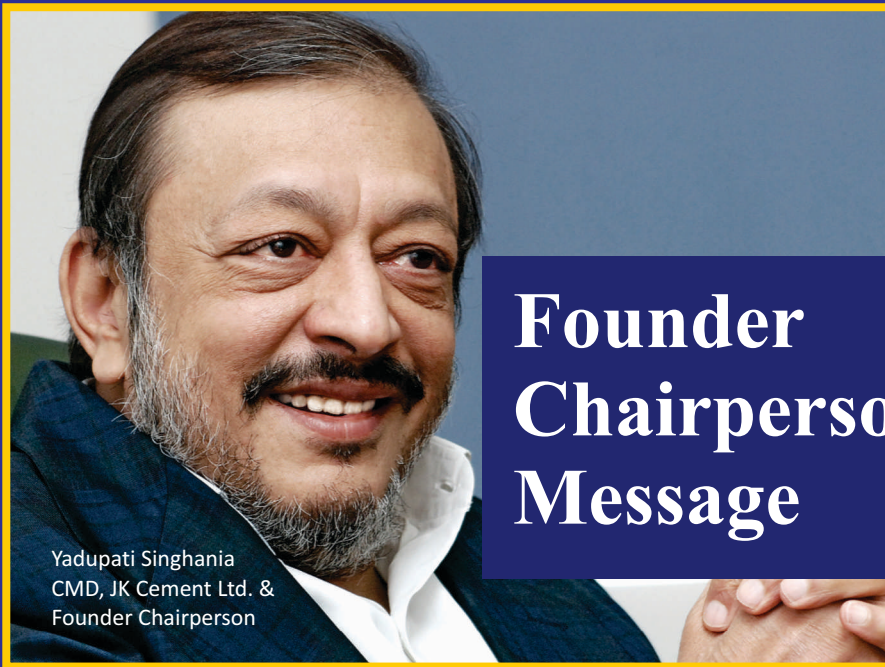


VISION

To be a leader among educational institutions by building a tradition of innovation, problem solving and interdisciplinary collaboration to meet the changing needs of the society.

Mission

We believe that education should be both broad and useful, enabling students to participate in "the humane culture of the community" and to discover and apply knowledge of the benefit of society. Our emphasis on "learning by doing" and on the value of useful knowledge is at the heart of the University's education mission. Our mission is to advance knowledge and educate students in science, technology management and other areas of scholarship that will best serve the nation and the world in the 21st century. The University is committed to generating, disseminating and preserving knowledge and to working with others to bring this knowledge to bear on the world's great challenges. Our University is dedicated to providing its students with an education that combines rigorous academic study and the excitement of discovery with the support and intellectual stimulation of a diverse campus community. We seek to develop in each member of the University, the ability and passion to work wisely, creatively and effectively for the betterment of humankind.



Yadupati Singhania
CMD, JK Cement Ltd. &
Founder Chairperson

Founder Chairperson's Message

As India moves forward, the pace of change accelerates and conflicts between technology and society, humankind and the environment are becoming increasingly evident. At the same time, the age of nations is coming to an end and global competition has inspired a growing awareness of the need for a collective human society. In this era of rapid change Sir Padampat Singhania University intends to contribute to that international goal by reviving the importance of "Knowledge". I sincerely believe that knowledge, a critical mind, the capacity to understand and a sense of individual and collective responsibility are the antidotes to ignorance. Essentially, knowledge frees human beings. It is a profound source of power that encourages candid human interaction and provides people with vigor as well as liberating them from various limitations. The creation and application of new forms of knowledge will no doubt determine the future direction of human society. Sir Padampat Singhania

University will strive to achieve three primary objectives to deliver a distinctive first quality education, to foster research, creation and discovery and to use the knowledge created on campus to serve society. Our institution will be a conceptual space where ideas are nurtured and dreams take flight. It will be a family of communities within a larger community. It will also be a physical landscape that both celebrates our traditions and stands as a gateway to the future. Our university invites its faculty and students to join a common search for answers to the fundamental and pressing questions that confront society. We do so not in the name of learning alone but, in the words of our informal motto, to create through a synergy of the mind and hands. Let it be the vigorous unremitting effort of your whole life to leave the world wiser and better than you found it at your entrance. In the process we will not guarantee you a job but a lifetime or employability.

School of Engineering

The word “engineering” is derived from the Latin words meaning “cleverness” and “to contrive, devise,” respectively. Tinkerers, builders, fixers, problem solvers, and computer geeks alike are drawn to the field of engineering for its diversity of applications, all of which thoroughly embrace the spirit of the origins of the word.

High pay, low unemployment, near-endless prospects, and the opportunity to work on the cutting edge of science and technology? Engineering studies offers all of this and more for the world's future problem solvers. From safety and security to transportation and the environment and so much more, engineers are constantly pushing the boundaries in order to make the world work better. By addressing real world challenges with creative and innovative solutions, engineers promote progress. And while we all want to change the world, many engineers actually end up doing so.

Deciding to be an engineer is just half of the journey. For selecting which engineering discipline to pursue, it's best to follow your own personal interests. SPSU offers the following engineering fields:

- Biotechnology
- Computer Science & Engineering
- Electronics & Communications Engineering
- Mechanical Engineering

As a graduate of an engineering program, you will be eligible to work in a number of different fields. While careers in the technical arena, such as project management, construction management, technical sales and information systems, are more obvious routes, many engineers pursue non-technical careers in fields such as finance, business, public policy, and architecture. Whichever direction you choose, engineering prepares you with lifelong skills, including innovation, problem solving, decision making, team working, project management and communication.



B.Tech. in Biotechnology

Course Description

Biotechnology is one of the most advanced disciplines of biology. Modern molecular biological techniques are applied on living cells, system or biological process to produce the product which is ultimately useful for betterment of human beings. The technology basically utilises cells and cellular components such as DNA, proteins and other cellular biomolecules to develop the products. The scope of biotechnology extends to various areas like pharmaceutical and healthcare, agriculture, forestry, sericulture, horticulture, industrial bio-product food processing, environmental cleaning, forensic sciences, bioinformatics, etc. Recently many breakthroughs have been made by using biotechnological tools in all the areas mentioned above. Needless to mention, the scope of biotechnology is vast.

Eligibility for Admission :

- (i) Pass in 10+2 Science or its equivalent examination from a recognised board (Preferably above 60%)
- (ii) Admission to all SPSU Programmes will be through SPSAT

Course Duration : 4 Years



B.Tech in Civil Engineering

Course Description

Civil Engineering is one of the oldest engineering disciplines which is primarily responsible for the construction of society's infrastructure (e.g. buildings, roads, dams, canals, etc.). Civil engineers play a vital role in the progress and development of modern society by designing, constructing, maintaining, and managing infrastructure. A civil engineer must acquire a specific set of skills and knowledge to fulfill its mandate to benefit society. Civil engineers play a key role in planning, designing and supervising construction projects such as roads (Expressways, national and state highways), railway infrastructure, metro rail infrastructure, bridges (railways and highways), airports, dams, canals, tunnels, water supply, and wastewater systems. The

department offers a four-year B.Tech. degree program with a course curriculum that promotes Industrial Training/Internship and industry visits for the student to gain practical knowledge and understanding of field constraints. The department is well equipped with excellent laboratories and ICT based learning infrastructure.

Eligibility for Admission :

- (i) Pass in 10+2 (PCM) Science or its equivalent examination from a recognised board (Preferably above 60%)
- (ii) Admission to all SPSU Programmes will be through SPSAT.

Course Duration : 4 Years

For Study Abroad opportunities, please refer to International Collaborations Section



B.Tech in Computer Science & Engineering

Specialization in :

- Cloud Technology & Information Security (CTIS)
- Artificial Intelligence & Machine Learning (AI&ML)

Course Description

The department of Computer Science and Engineering is committed to provide in-depth foundation in all areas of Computer Science & Engineering. The department has initiated B.Tech degree programmes in Computer Science & Engineering with specializations in Cloud Technology & Information Security and Artificial Intelligence & Machine Learning in addition to the core degree of Computer Science & Engineering. The curriculum is contemporary and has a hands-on approach to learning.

Specialization in Cloud Technology & Information Security is one of the most powerful technology of recent times that has raised interest among companies. The increased dependency on internet for all forms of communication and data storage has heightened the risk of data security breach. Companies are increasingly focusing on protecting their networks and servers by employing information security solutions. Cloud Computing Technology has successfully provided best and

optimized result platform to new age users who look forward to protecting information and technological development.

Specialization in Artificial Intelligence and Machine Learning shall hone up the skills of graduates who would become future leaders in solving industry's technical problems and daily life problems faced by humans. The course covers most of the foundational aspects of computing sciences, develops design thinking, problem solving skills using computing sciences and project based learning skills.

Eligibility for Admission :

- Pass in 10+2 (PCM) Science or its equivalent examination from a recognised board (Preferably above 60%)
- Admission to all SPSU Programmes will be through SPSAT.

Course Duration : 4 Years

For Study Abroad opportunities, please refer to International Collaborations Section



B.Tech in Electronics & Communication Engineering

Specialization in :
● Internet of Things (IoT)

Course Description

Electronics & Communication Engineering is one of the largest and most sophisticated branches of engineering. Electronics has a major role in improving productivity in industries like oil, energy, agriculture, infrastructure and so many other important sectors of economy. Well-equipped laboratories like Electrical and Analog Electronics Lab, Microprocessor and Micro-controller Lab, Digital Signal Processing (DSP) and Very large Scale Integrated Circuits (VLSI) Lab, Digital Electronics & Communication Lab, Instrumentation lab and Project lab provides learning through software and hardware platforms. The ECE department offers specialization in Internet of Things in addition to the core branch of Electronics & Communication Engineering.

Internet of Things (IoT) relates to physical and virtual objects that have unique identities and are connected to the internet to facilitate intelligent applications that make energy, logistics, industrial control, retail, agriculture and many other domains “smarter”. Internet of Things is a


new revolution of the internet that rapidly gathering momentum driven by the advancements in sensor networks, mobile devices, wireless communications, networking and cloud technologies. As per the experts, the number of Internet-connected devices will exceed 50 billion by 2030. Specialization in Internet of Things shall help students discover the supporting skills such as embedded systems and wireless sensor networks. Firms are in search of experts who have sound knowledge of IoT.

Eligibility for Admission :

- (i) Pass in 10+2 (PCM) Science or its equivalent examination from a recognised board (Preferably above 60%)
- (ii) Admission to all SPSU Programmes will be through SPSAT.

Course Duration : 4 Years

For Study Abroad opportunities, please refer to International Collaborations Section



B.Tech in Electrical Engineering

Course Description

Electrical systems and computers form the backbone of many of the structures central to contemporary life. Communication, medicine, education, space exploration, defense and other critical sectors of our society and economy depend on electrical engineers and their expertise in design, analysis and efficiency. As an electrical engineering major, one will work closely with top-ranked faculty to gain an understanding of the fundamental knowledge and theories that underpin modern engineering. Student will also put his/her learning into practice with innovative hands-on projects that will challenge and inspire other. The University believes in educating its learners soundly in the various technical aspects with an eye towards generating a highly skilled work-force for the various industries. The education thus involves, besides basic theory, well-designed experiments, projects, industrial visits, seminars, workshops, training programs etc.

Programme Objectives

- To impart knowledge in the area of Electrical Engineering.

- To continuously improve results, and employment through campus.
- To amplify industry-institute collaboration for activities such as In-plant training, industrial visits and sponsored research.
- To increase the quality and quantity of papers published in International journals and Conferences.
- To enhance research and consultancy activities in the Department.

Department has well equipped laboratories to carry out the experimental work.

Eligibility for Admission :

- (i) Pass in 10+2 (PCM) Science or its equivalent examination from a recognised board (Preferably above 60%)
- (ii) Admission to all SPSU Programmes will be through SPSAT.

Course Duration : 4 Years

For Study Abroad opportunities, please refer to International Collaborations Section

HITACHI
 Rail Systems,
 JAPAN

**B.Tech in
 Mechanical
 Engineering**

Specialization in :

- **Rail Transportation**
- **Automation & Robotics**



Course Description

Mechanical Engineering derives its breath from the passion to design and manufacture everything from micro devices to huge systems like aircraft. Variety of industries need mechanical engineers such as automotive, aerospace, biotechnology, computers, electronics, microelectromechanical systems, energy conversion, environmental control, automation and manufacturing. The course curriculum is contemporary and oriented towards the practical learning of engineering principles. The department of ME offers specialization in Rail Transportation and Automation & Robotics in addition to the core branch of Mechanical Engineering.

Rail Transportation specialization is an interdisciplinary programme encompassing Civil, Mechanical, CSE and ECE. Students, after pursuing this programme, shall be able to take up vocations related to various components of rail transportation in the relevant industry.

Selected students will undergo a paid industry internship programme for eight weeks at Hitachi Rail System Ltd. in India or Abroad.

Automation and Robotics is an interdisciplinary specialized branch, which uses the knowledge of ME for designing and controlling of robot movement, ECE for data sensing and controlling and CSE for programming and data analytics. In the scope of industrialization, automation is a step beyond mechanization. Today, industries are using collaborative robots (cobots), which can perform tasks next to human operator and have built in safety features.

Eligibility for Admission :

- (i) Pass in 10+2 (PCM) Science or its equivalent examination from a recognised board (Preferably above 60%)
- (ii) Admission to all SPSU Programmes will be through SPSAT.



B.Tech in Mining Engineering

Course Description

Mining is mother of all industries and is an important part of economy as every Industries use minerals ranging from making complex parts of airplanes to manufacture simple bits of needle. India has a rich mineral resource and produces roughly 100 minerals, which are an important source for earning foreign exchange as well as satisfying the domestic needs. In order to maintain the sustainability of mining, it is essential for proper development and production from the mining industry. Thus, mineral Industry needs highly trained engineers and scientists for extracting these minerals with technological innovation, environmental friendly, safe and cost effective methodologies to develop our natural resources. As a result, the demand for advancements in Mining Industry is bound to boost and a career in mining has become a lucrative option.

The department offers B. Tech degree programme with an integrated approach by incorporating contemporary syllabus in both theory & practical. The laboratories are equipped with the state of the art softwares, instruments and modern facilities.

Eligibility for Admission :

- (i) Pass in 10+2 (PCM) Science or its equivalent examination from a recognised board (Preferably above 60%)
- (ii) Admission to all SPSU Programmes will be through SPSAT.

Course Duration : 4 Years



M.Tech (Master of Technology)

Course Description

Specializations/ Disciplines:

Biotechnology, Computer Science & Engineering, Electronics & Communications Engineering, Mechanical Engineering

Eligibility for Admission:

- **Biotechnology**

Bachelor's degree in Biotechnology or equivalent/ M.Sc. in Biotechnology/ Biology/ Zoology/ Botany/ Microbiology/ Biochemistry/ Life Sciences as a regular student from recognized University.

- **Civil Engineering**

1. Bachelor's degree in Civil Engineering or equivalent as a regular student from recognized University.
2. Admission to all SPSU Programmes will be through SPSAT.

Specializations:

- (i) Environmental Engineering
- (ii) Structural Engineering

- **Computer Science & Engineering**

Bachelor's degree in Computer Science & Engineering or ECE or equivalent/ M.Sc. in

Electronics or Computer Science or Physics or Mathematics/ M.C.A. as a regular student from recognized University.

Specializations: Data Science, Computer Networking

- **Electronics and Communication Engineering**

Bachelor's degree in Electronics and Communication Engineering or equivalent/ M.Sc. in Electronics or Physics as a regular student from recognized University.

Specializations: VLSI and Embedded Systems

- **Electrical Engineering**

Bachelor's degree in Electrical Engineering or equivalent as a regular student from recognized University.

Specializations: Energy & Power System

- **Mechanical Engineering**

Bachelor's degree in Mechanical/ Production Engineering or equivalent as a regular student from a recognized University.

Specializations: Machine Design, Manufacturing

- **Mining Engineering**

Bachelor's degree in Mining Engineering or equivalent as a regular student from recognized University.

Specializations: Mine Environment and Mine Planning

Admission to all SPSU Programmes will be through SPSAT.

Course duration: 2 Years





MCA (Master of Computer Applications)

Course Description

Computer applications are transforming every aspect of our lives. Digitization and computerization has revolutionized the operations and services and has made the complicated industrial, scientific and technological operations easy. The computer industry, both, software and hardware, has a very bright future and provides excellent opportunities for fresh graduates to be professionally employed. The MCA program focuses on providing a sound theoretical background as well as good practical exposure to students in the relevant areas. It is intended to provide a modern, industry oriented education in applied computer science.


Eligibility for Admission :

(i) A pass in any Bachelor's degree of minimum 3 years duration with mathematics at 10+2 level or at Graduate level and obtained atleast 50 % in the qualifying degree examinations.

- (ii) **MCA (Lateral Entry):** A pass in Bachelor's degree of minimum 3 years duration in BCA, B.Sc. (Information Technology / Computer Science) with mathematics as a course at 10+2 level or at Graduate level and obtained at least 50 % in the qualifying degree examinations.
- (iii) Admission to all SPSU Programmes will be through SPSAT

Course Duration :

3 Years



PhD (Doctoral Degree Programme)

E. Sreedharan (Metro Man)
receiving degree of
Doctorate of Philosophy

Course Description

SPSU offers all its academic programmes in the Semester System with Choice Based Credit System.

All Ph.D. scholars are required to complete a course work involving both Major and Minor disciplines before taking up full-fledged research. The course work is designed to enhance the scholar's capability to match the proposed research work under each discipline.

The broad areas of research include bio-informatics, plant and animal biotechnology, medical biotechnology, image processing, artificial intelligence, data mining, networking, neural networks, machine learning, VLSI design and fabrication, digital signal processing, embedded systems, WSN, mobile communication, production, design & manufacturing, materials & structures to name a few.

Specializations:

- Biotechnology
- Computer Science & Engineering
- Electronics & Communication Engineering
- Mechanical Engineering.

Eligibility for Admission :

- (i) Post-graduate degree (preferably in the discipline concerned) from a recognized university with 55% marks
- (ii) Admission to all SPSU Programmes will be through SPSAT

Course Duration :

Minimum 3 Years

School of Management

Management as a field of study and professional development provides students with the knowledge and skills to understand corporate functioning and develop themselves to occupy leadership positions. Management courses have drawn extensive interest from professionals as well as corporates on account of the key role managers play in taking companies forward.

SPSU offers the following courses in Management:

- Bachelor in Business Administration
- Bachelor of Commerce
- Master of Business Administration
 - Finance
 - Marketing
 - Human Resource
 - Information Technology
- Doctoral Degree Programme





BBA (Bachelor of Business Administration)

Course Description

BBA degree programme has been developed by incorporating the relevant theory & practical aspects of business administration. The programme includes both classical & contemporary conceptual knowledge & skills having relevance to business administration. Students who are committed to a career in management are ideally suited to this degree programme. It has been designed keeping in mind the requirements of the industry so as to prepare students for a successful business career in the global economy.

The teaching pedagogy includes case discussions, industry interactions & international exposure through exchange programmes to bring out the best in the students. The course curriculum of BBA degree programme is based on Choice Based Credit System (CBCS). After

completion of the graduation programme, multiple avenues are available to the BBA students including employment in banking, insurance & corporate sector.

Students can also pursue higher studies in specialized areas of their choice.

Eligibility for Admission :

- (i) Pass in 10+2 in Science, Arts or Commerce from a recognised board (Preferably above 60%)
- (ii) Admission to all SPSU Programmes will be through the Admission Test - SPSAT.

Course Duration: 3 Years

For Study Abroad opportunities, please refer to the International Collaboration Section.



B.Com (Bachelor of Commerce)

Course Description

The B.Com. degree programme aims to develop wide range of skills & proficiency in the field of commerce & accounting. The course curriculum is based on UGC guidelines & comprises ability-enhancement compulsory courses, skill-enhancement elective courses, core courses, discipline specific electives & generic electives. It provides in-depth understanding & working skills in accounting, taxation, banking, statistics, corporate law, economic policies & other aspects that impacts trade & business.

The main objective of this program is to impart conceptual knowledge & skills for recording & analyzing various kinds of business transactions for a company & other forms of business.

It helps the students to familiarize with the applications of mathematical, statistical & IT skills necessary for business decision making and to prepare the students for higher professional qualifications in the field of commerce & finance.

Eligibility for Admission :

- (i) Pass in 10+2 in Science / Arts / Commerce from a recognised board
- (ii) Admission to all SPSU Programmes will be through the Admission Test - SPSAT.

Course Duration: 3 Years



**MBA
(Master of
Business
Administration)**

Course Description

The MBA degree programme is contemporary. It is based on Choice-Based Credit System (CBCS) & is in keeping with the needs of the industry. The teaching pedagogy comprises of a comprehensive student-centric learning approach. It consists of several stages of instruction & evaluation designed to add significant value to the understanding of the learner in an integrated manner. Course delivery comprises of classroom instruction, case-studies, live projects & seminars.

The programme offers an opportunity to pursue dual specialisation in functional areas of management to enhance the employability & entrepreneurship abilities of the learners. Special emphasis is given on international exposure, soft skills & personality development. It provides an in-depth understanding of topics related to business, various sectors of Indian economy & international business environment.

Specializations: Human Resource, Finance, Marketing, Information Technology & Operations Research

Eligibility for Admission :

- (i) Graduation in any discipline (Preferably above 60%)
- (ii) Admission to all SPSU Programmes will be through the Admission Test -SPSAT.

Course Duration: 2 Years

For Study Abroad opportunities, please refer to the International Collaboration Section.



PhD (Doctoral Degree Programme)

R.C. Bhargava receiving degree of
Doctorate of Philosophy

Course Description

SPSU offers all its academic programmes in the Semester System with Choice Based Credit System. All Ph.D. scholars are required to complete a course work involving both Major and Minor disciplines before taking up full-fledged research.

The course work is designed to enhance the scholar's capability to match the proposed research work under each discipline.

Disciplines

- Finance
- Human Resource
- Marketing
- Information Technology

Eligibility for Admission :

- (i) Post-graduate degree (preferably in management subjects) from any recognized university with 55% marks
- (ii) Admission to all SPSU Programmes will be through the Admission Test - SPSAT.

Course Duration :

Minimum 3 Years

International Academic Collaboration

Sir Padampat Singhania University in its attempt to offer a unique learning experience and international exposure has collaborated with Universities abroad.

University of Nebraska, Omaha, USA

The Academic Collaboration Agreement between University of Nebraska at Omaha (UNO), USA and SPSU comprises:

- Short duration immersion programmes
- One semester study abroad programme, and
- Integrated Masters Programme (3 years in India and 2 years in the USA)



Chiba University of Commerce, Japan



The Chiba University of Commerce (CUC) is one of the premier universities of Japan. The academic partnership of SPSU with CUC is primarily in the areas of student exchange and research collaboration. It aims at developing and establishing high quality education system through internationalization of teaching and curriculum. As a part of student exchange policy, the two partner universities organize semester exchange and summer immersion programmes on a reciprocal basis. These exchange programmes comprise of lectures,

industrial visits, cultural experiences and excursions and also involves participants from different countries across the globe. The interaction with such multi-cultural peer group is a great learning experience for students of SPSU.

International Academic Collaboration

Lincoln University, Oakland, CA, USA

SPSU announces yet another academic initiative to help its student population. This arrangement, similar to its existing ones with USA and Japan, will provide another opportunity to its Management and Engineering students (BBA & B.Tech) to study in and earn a Master's degree in the USA.

SPSU and Lincoln University, Oakland, USA has signed an MOU to provide international education and practical training for SPSU students. BBA and B.Tech students from SPSU will be given direct entry to the Lincoln University MBA Programme without appearing for IELTS or GMAT. The specializations offered for the Lincoln MBA are International Business (IB), Finance Management and Investments (FMI), General Business (GB), Management Information System (MIS), Human Resources Management (HRM) and Marketing (M).



Sir Padampat Singhania University Udaipur

Chiba University of Commerce Students at SPSU

Rail Transportation in Collaboration with Hitachi Rail Systems Ltd., Japan



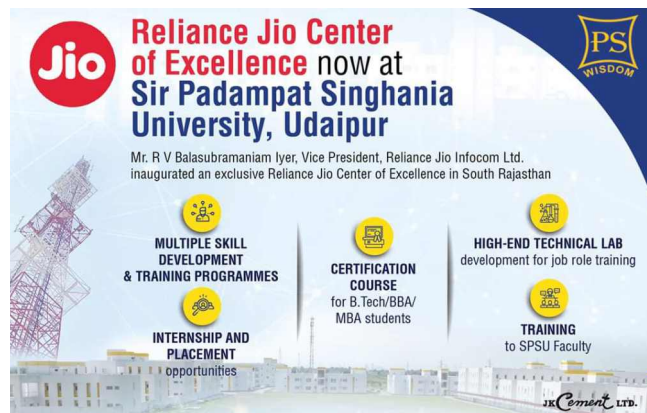
Sir Padampat Singhania University has an MOU with Hitachi Rail Systems Ltd., Japan for the specialization in Rail Transportation degree programme. Selected students of Rail Transportation undergo an industry internship programme for eight weeks at Hitachi Rail Systems Ltd. in India or Abroad.

Reliance Jio Center of Excellence at SPSU

Sir Padampat Singhania University has signed MoU with Reliance Jio Infocom Ltd. and established the "Reliance Jio Center of Excellence " on campus. It is an exclusive Reliance Jio Center of Excellence in South Rajasthan.

The major benefits from this collaboration include:

- Multiple skill development/ training programs for management and engineering students.
- Internship and placement opportunities/ support to the graduating students.
- High-end technical lab development for job role training at SPSU.
- A course (relevant to Reliance Jio's business/work profile), specially designed by the SPSU faculty members and experts from Reliance Jio, will be floated for B.Tech/BBA/MBA students. The candidates who clear the online test, will get a certificate of completion from Reliance Jio Infocom Ltd.
- Training to selected faculty members for developing the course material and conduct refresher programs as well.



Electric Vehicle Skill Enhancement Centre at SPSU

M/S Okinawa Auto Tech Private Limited- First Electronic Vehicle Manufacturer in India has chosen Sir Padampat Singhania University, Udaipur as one of the 5 Centers of Excellence in India. The mission of this collaboration is to bring about a revolutionary change in the automobile industry by using the electric vehicle and contribute towards a sustainable and cleaner future. The company will establish

- A full-fledged laboratory on Electric Vehicle at SPSU
- A Skill Enhancement Centre in the University and
- Provide SPSU students hands-on training by using tools to develop electric vehicles
- Provide internships and job opportunities in this field.

Electric Vehicle Skill Enhancement Centre at SPSU

Okinawa Auto Tech Private Limited- **First Electronic Vehicle Manufacturer in India** has chosen SIR PADAMPAT SINGHANIA UNIVERSITY, Udaipur as one of the 5 centres of Excellence in India.

www.spsu.ac.in



CISCO Networking Academy

Sir Padampat University has been recognized as Cisco Center of Excellence and Instructor Training Center for other colleges and universities. SPSU has a Cisco Certified Instructor Trainer. Cisco Networking Academy has been running CCNA courses since 2011 at SPSU.

About SPSU



Sir Padampat Singhania University has been established through an Act of the State Government of Rajasthan. The University is empowered to award degrees under section 2(f) of the UGC Act, 1956. The university is a member of Association of Indian Universities (AIU).

SPSU has two constituent schools, namely, School of Engineering & School of Management. Both the schools offer educational programmes at Undergraduate, Postgraduate and Doctoral levels.



Faculty

The University has a team of qualified and dedicated permanent faculty members from diverse fields. Most of the faculty members hold PhD degree from reputed national and International Institutions and few have international postdoctoral research experience. The faculty members are involved in various consultancy projects awarded by reputed Industries, Government organisations and foreign Universities. They are actively involved in publishing research papers, patents organizing / participating in Conferences / Workshops / Symposiums and chairing sessions in various educational conclaves. The university also invites professionals both from academia and industries on regular basis in order to make the student conversant with the latest trends and technologies.



University Infrastructure and Physical Assets

No	Facilities	Capacity / Numbers
1	Administrative Block	1 Block / 11 Units
2	Faculty office	2 Blocks / 96 units
3	Academic Buildings	
	Class Rooms	2 Blocks / 24 units
	Lecture Theatre	3 units
	Laboratory Block	
	Biotechnology	3 units
	Chemistry	1 units
	Physics	3 units
	Computer Science & Engg	6 units
	Electronics & Comm. Engg	8 units
	Electrical Engineering	2 units
	Workshops	
	Civil Engineering	2 Blocks / 3 units
	Mechanical Engineering	2 Blocks / 4 units
4	Library	
5	Hostels	
	Boys Hostel - 1	180 Seats / 90 Rooms
	Boys Hostel - 2	180 Seats / 90 Rooms
	Boys Hostel - 3	270 Seats / 135 Rooms
	Boys Hostel - 4	220 Seats / 110 Rooms
	Boys Hostel - 5	220 Seats / 110 Rooms

No	Facilities	Capacity / Numbers
	Girls Hostel - 1	80 Seats / 110 Rooms
	Girls Hostel - 2	120 Seats / 60 Rooms
	Girls Hostel - 3	120 Seats / 60 Rooms
	Studio Apartment	240 Seats / 120 Rooms
6	Dining Hall - (Well-equipped kitchen, R.O. water, Water coolers, Fire protection equipment and Telephone Connectivity)	
	Ground Floor	1 unit
	First Floor	1 unit
7	Faculty / Officer's Residences	
	FR - 1	2 BR / 8 Unit, 3 BR / 8 Unit
	FR - 2	2 BR / 8 Unit, 3 BR / 8 Unit
	FR - 3	2 BR / 8 Unit, 3 BR / 8 Unit
	FR - 4	2 BR / 36 Unit
	(All the hostels & faculty residences are provided with Internet, Telephone & T.V. connectivity, R.O. water, Standby power backup, and Security services. Hostels also have facilities for indoor games, Fire alarm Systems and Common rooms)	
8	Staff Quarters	4 blocks / 20 units
9	Electricity Distribution Room	1 unit
10	Amphi Theatre (An open stage auditorium for organizing cultural and other activities.)	1 unit

No	Facilities	Capacity / Numbers
11	Play Grounds	
	Foot Ball Ground	1 No.
	Cricket Ground	1 No.
	Basket Ball Court	1 No.
	Valley Ball Court	4 No.
	Badminton Court	7 No.
12	Sewage Treatment Plant (STP)	3 Nos.
13	Campus road	



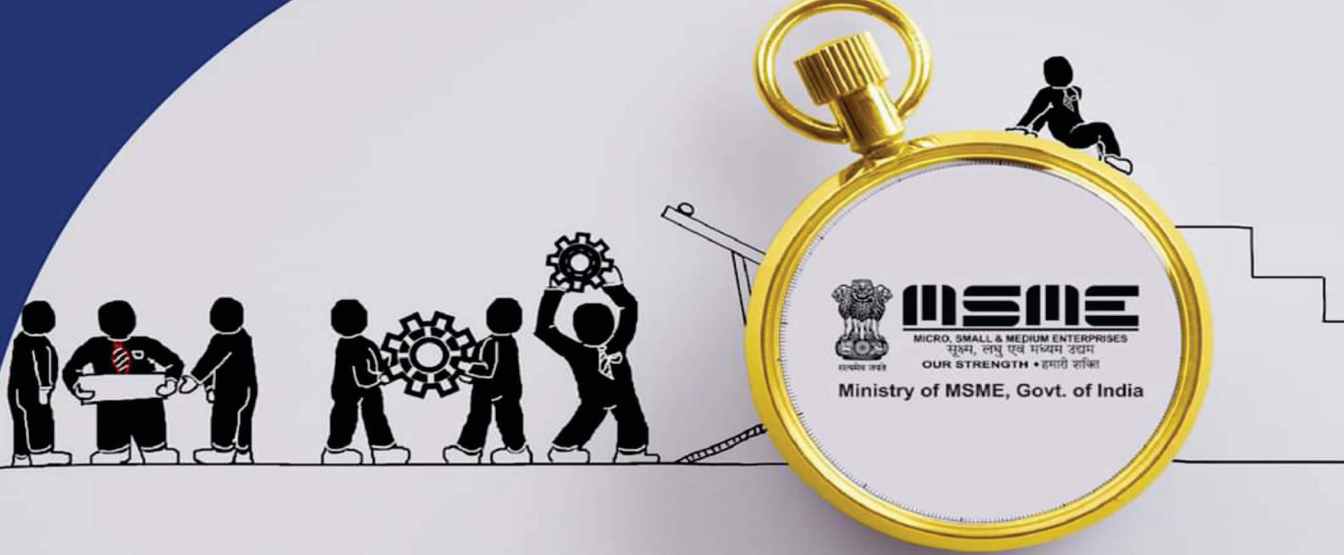


Facilities

The University has well equipped laboratories, air cooled classrooms with audio visual facility, air conditioned lecture theatres, well stocked central library, cafeteria, open gym, yoga hall, running track, sports grounds (football, cricket, volleyball, tennis, kabaddi, basketball, badminton), indoor games, open Amphitheatre, uninterrupted 24 hrs. power supply, 100% solar power backup, RO water, sewage treatment facility, bank ATM, 24 hrs. G4 security, photocopy & stationary and medical facility.

The campus is Wi-fi with 325 Mbps internet connectivity. The university has a separate mess for vegetarian and non-vegetarian food. The Student Mess Committee decides the menu for all the meals and ensures the quality of food being served.

Hostel accommodation are on twin sharing basis. Each student is provided with a bed, study table, chair, and a wardrobe. Hot and cold water is provided in all bathrooms. Clean drinking water (RO water) is provided throughout the campus.



Business Incubator at SPSU, Udaipur

A Business Incubator was established at SPSU in 2013

The objective of the Business Incubator centre is to provide a suitable environment, funding and infrastructural support to the innovators at the early stages of idea generation and planning.

Anybody from the State of Rajasthan can register to incubate their ideas at this incubation centre.

Business Incubator

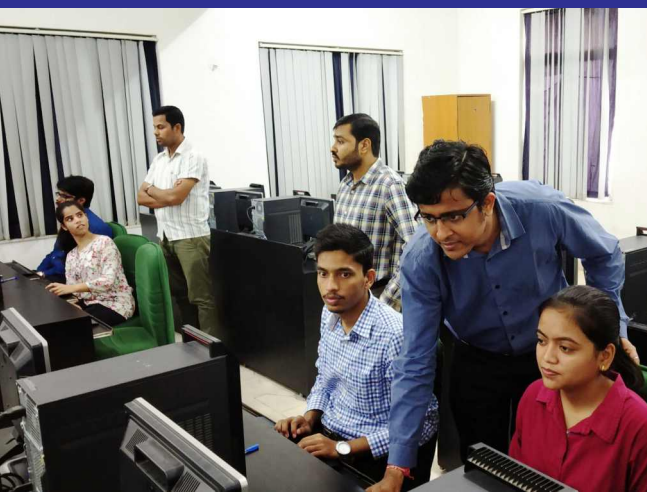
SPSU Business incubator was established in 2013 under the scheme “Support for Entrepreneurial and Managerial Development of SMEs through Incubators”, of the Ministry of Micro Small and Medium Enterprises (MSME), Government of India. The objective of the scheme is to provide early stage funding to nurture innovative business ideas (new indigenous technology, processes, products, procedures, etc.) that could be commercialized within a year. The scheme promotes emerging technological and knowledge- based innovative ventures that seek the nurturing of ideas from professionals beyond the traditional activities of Micro, Small & Medium Enterprises (MSMEs). Such entrepreneurial ideas have to be fostered and developed in a supportive environment before they become attractive for venture capital. The Ministry of MSME acts as the nodal Ministry for the development of entrepreneurship and creation of self-employment and additional employment avenues.

The SPSU Business Incubator aims to provide suitable environment and infrastructural support to the innovators at the early stages of idea generation and planning. It is also engaged in research and development activities in the frontal areas of technology having relevance to the society and are marketable in the future. The incubator also assists the innovators in establishing networking and linkages with the various stakeholders, in order to nurture their ideas and help to commercialize their innovative processes and products.



Training & Placement

SPSU has a consistent track record of over 90% placements of eligible students. The Corporate-Interface and Placement Cell of the University facilitates the process of placements of students. The office liaises with various industrial establishments, corporate houses/companies of all sizes, from startups to established ones that conduct campus interviews and select students from various disciplines. The Cell organizes seminars, workshops, lecture series by experts of the Industry and Academia. In addition, employability support programmes based on a framework developed by assessment companies like AMCAT are provided to the students. AMCAT also provides opportunities to the students in various companies based on their online test scores.



Major Recruiting Companies

Several companies of repute have been amongst our prime recruiters like JK Cement, IBM, TCS, Hewlett Packard, McKinsey, Syntel, Bollhoff, Mindtree, JK Technosoft, CMS, Indus Bank, Axis Bank, SpiceJet, JBM Group, ICICI Bank, ICICI Prudential Life Insurance, Maintec Technologies, Indian Army,

Indian Navy, Collabera, Mphasis, Aspiring Minds, Taj Lake Palace, Siemens, Yuva Prerak Programme of Raj State Govt, Naukri.com, TDI Infrastructure, Great Eastern Shipping, CISCO, BYJU's, L & T, Justdial, Paytm, Pinnacle, Cognus, Wipro, ValeurHR and many more.



Pre-Placement offers

Students have been associated with live internship projects in companies like JK Cement Ltd., NHAI, NW Railways Cube Construction Ltd., Traverse Infra, Siemens, ValueHR and Hitachi Rail

Systems etc. Job offers have been given to some of the students who have been associated with the companies during their summer training and projects.

SPSU Alumni

SPSU Alumni are doing exceptionally well & are associated with reputed companies, some of which are Hitachi Rail Systems, Infosys, Maruti Suzuki, Cognizant, Microsoft, Indian Army, Indian Air Force, Apple to name a few. Some have excelled as entrepreneurs after completion of their studies with our university.




RONAK MATHUR



B.Tech (Mechanical Engineering, 2014-18) from SPSU has changed my life due to International Placement in JK Cement (Dubai Plant)



Selected in the Indian Forest Services, Kerala Cadre. Proud to be a student of SPSU



Mr. Ramesh Bishnoi
Class of 2008





Ronak Maniar
Qualcomm Inc,
United States

“SPSU made me independent in terms of acquiring knowledge and developing skills. My professors nurtured my skills to compete the real world. I am greatly thankful to SPSU for providing me such a great platform.”





Nirmal Singh,
Class of 2008, B.Tech

“Outward learning experience has given me an extra dimension helping me build a successful career. This added dimension is unique and has carved a niche for all the students of SPSU”





Eeshan Pandey
Class of 2011, B.Tech

“SPSU helped me to add value to my engineering degree. I was selected as a Microsoft Student Partner and also received Global Shapers Fellowship among 10,000+ students worldwide...”





Amreen Qureshi
Class of 2007, B.Tech

“There is a great focus on quality education, courtesy our management and highly qualified faculty members...”



Student's Feedback on MS Programme

Ever Since my School days I dreamt of pursuing my education from USA. I am fortunate enough that I got an opportunity from Sir Padampat Singhania University, Udaipur. The Plus 2 Integrated Graduate Programme (MS) provides international exposure and help students frame a better future. The fee waivers under this programme support the students financially. I was quite overwhelmed and ecstatic when I got selected. I strongly recommend this programme to all my peers. I thank my university for encouraging me and helping me to make my dream a reality.



Vasu Parikh

Activities held during exchange programme with UNO, OMAHA, USA

- 1 One week orientation programme
- 2 Visit to Henry Doorly Zoo and Aquarium, Omaha
- 3 Attending classes on various courses in the campus
- 4 Cultural activities including game shows, swimming and other competitions.
- 5 Visits to software and hardware manufacturing units in and around the city.
- 6 Part time job fairs
- 7 Industrial visits to Gallup and Valmont
- 8 Event to experience almost all cultures under single roof.
- 9 Weekly fun activities for hostel residents.
- 10 Programme to provide a best mix of academic and real life experiences.



SPIC MACAY

in collaboration with
SPSU University performed a play
'Charan Das Chor'



Campus Life



Campus Life



SPSU has a vibrant student's life on campus. The University has over 20 clubs managed exclusively by the students. These themes based or interest oriented clubs range from music, dance, fashion to entrepreneurship, computers, astrology, cricket, football, basketball badminton and volleyball. Students are actively involved in organizing University functions like Pride: A Tech Cultural Fest, Eminence, Sports Fest, Music and DJ Nights and Orion's' Fresher's Night.

Annual sports event “Eminence” is organized every year which attracts participation from different universities

and colleges in various indoor and outdoor sports. The dates for these university functions are earmarked in the academic calendar at the beginning of the academic session.

There is a Sports Board which monitors the activities of all the sports clubs. Further, the university sports coach assist and monitor students on the field.

The university also has a NCC and NSS Cell. The NSS wing provides social services and has adopted a nearby village. Concern, the student representative cell was formed with a vision to provide a friendly and supportive environment to students.



How to Reach SPSU Udaipur



Distance from
Airport
17 mins



Distance from
Railway station
48 mins



Distance from
Bus Stand
47 mins

Location and Accessibility

The campus is about 30 kms from the city on National Highway No.76. Udaipur City is connected by direct Train and Flight services to all the major cities of the country. The University Campus is about 48 minutes' drive from Udaipur City railway station and City Bus stand and 17 minute drive from Udaipur Airport. The university is well connected to Udaipur city by RSRTC and private bus services.

www.spsu.ac.in

Campus

**Sir Padampat Singhania University
Bhatewar, Udaipur - Rajasthan 313601.**

City Office

**C/o J.K. Cement Ltd. Hill Villa Annexe, Opp. Hotel Hilltop Palace, Ambavagarth,
Udaipur - 313001 Rajasthan, Landline No: +91 294 2430102**

South Regional Office

**Flat No - 302, Sai Sushma Homes, Above Dhanalakshmi Bank, SR Nagar,
Hyderabad - 500030. Contact: 9393866888, 040-48519800**

Contact

**Mail : admission@spsu.ac.in
Alternate Id : info@spsu.ac.in
Phone No : 02957-226095
Fax No : 02957-226094**