
BE A

JERCIAN



JECRCTM
UNIVERSITY
BUILD YOUR WORLD

INFORMATION BROCHURE 2021

CHAIRPERSON SPEAKS

सा विद्या
या विमुक्तये

Dear Students

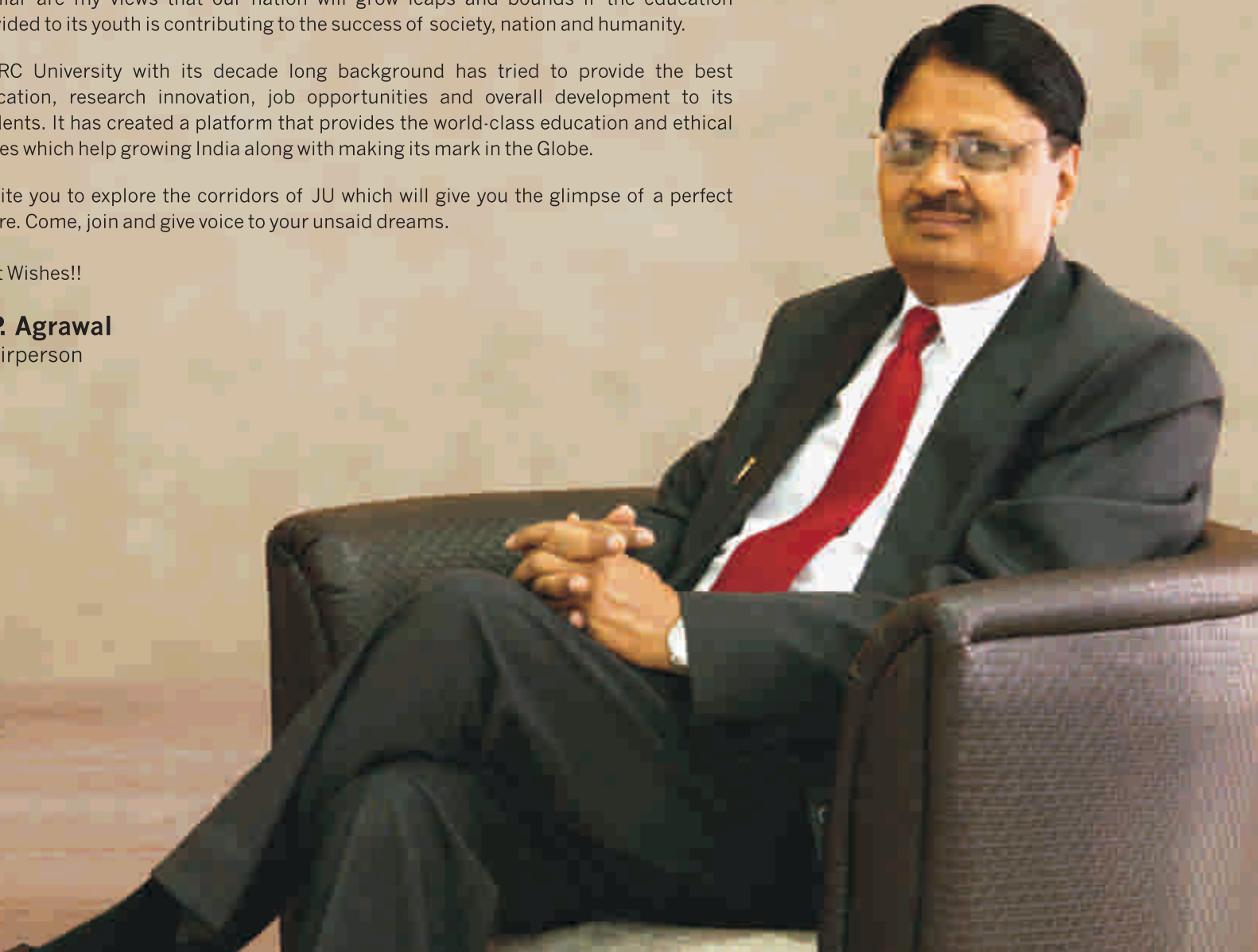
Swami Vivekananda, the great reformer and thinker of India used to say that '**A Nation is advanced in proportion to education and intelligence spread among the masses.**' He held the opinion that a sculptor has a clear idea about what he wants to shape out of the marble block; a painter knows what he is going to paint and similarly if a teacher molds the students then he is actually molding the future of a nation. Swamiji attempted to establish, through his words and deeds, that the end of all education is man making. Similar are my views that our nation will grow leaps and bounds if the education provided to its youth is contributing to the success of society, nation and humanity.

JECRC University with its decade long background has tried to provide the best education, research innovation, job opportunities and overall development to its students. It has created a platform that provides the world-class education and ethical values which help growing India along with making its mark in the Globe.

I invite you to explore the corridors of JU which will give you the glimpse of a perfect future. Come, join and give voice to your unsaid dreams.

Best Wishes!!

O.P. Agrawal
Chairperson



President Speaks



Prof. Victor Gambhir

All of us are passing through a testing time due to pandemic and a lot of disruption has happened in the 15 months in the education canvass of India. Had there been no pandemic, this would have been fantastic period for education sector because of the announcement of New Education Policy 2020 and the initiatives taken by the Government of India in digitisation of learning process, focus on research outcomes, participation of higher education institutions in national and international rankings etc. The blessing in disguise in pandemic times was continuation of theory classes through online mode, the transition which has been made very smoothly across educational institutions.

JECRC University has become a brand to reckon with because of multiple reasons including committed and qualified teachers, innovation led research culture, state-of-the-art infrastructure including labs, innovation led research environment, incubation and start-ups ecosystem, exemplary placement records on year to year basis, and overall highly committed and energetic students, who remain on the front and accept each and every challenge of quality learning.

We, at JECRC University strongly believe that when a student graduates from a university, there must be an affirmative change in her / his knowledge, skills, behaviour and attitude in such a manner that she / he is prepared in take the work responsibility at the employer's end head on. The entire teaching learning eco-system in JECRC University has been designed keeping in mind, the above conviction and it strongly reflects in the curriculum, and outside the class activities. There is a complete focus on Outcome Based Education and Project Based Learning.

Once you take admission in JECRC University please be assured that you will be on the right track of your career– building, provided you are committed and career-oriented. Without repeating the strengths of JECRC University which are reflected in this Admission Brochure, I can assure you that you will enjoy your journey with us and achieve whatever goals you set for yourself.

Keep in mind the lines of Swami Tulsidas in Ramcharit Manas:-

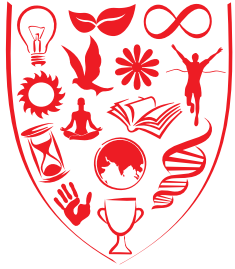
**सकल पदार्थ हैं जग माहीं,
कर्महीन नर पावत नाहीं ।**

Shri Krishna in Bhagwad Geeta tells Arjun that “You are kept from your goals not by obstacles but by a clear path to a lesser goal.”Once you have chosen to repose your faith in JECRC University, remain assured that the only person who may stop you from succeeding will be YOU only.

Welcome at JECRC University. Come and Build Your World.



JECRC UNIVERSITY



Established with art-of-state infrastructure in the Industrial and Institutional hub of the Pink City of India, JECRC University is driven by the spirit of innovation-led research. This is spelt out in infrastructure as well as practices. The multifaceted research institute encompasses subject-specific exploration as well as contexts of the business environment in which our students will operate and perform. JECRC is known for its strong research culture, close industry linkages and corporate connects. JECRC University has been established vide The JECRC University, Jaipur Act, 2012 (Act No.15 of 2012) published in the Gazette of Rajasthan dated May 2, 2012 and the University is approved by UGC. JECRC University has been accredited by NAAC (An Autonomous Institution of UGC).

FOURTH CONVOCATION CEREMONY

The Fourth Convocation ceremony was held on January 2, 2021 at JECRC University. Due to COVID-19 pandemic the ceremony was virtually organized this time. The event was graced by the benign presence of Padma Bhushan Justice Dalveer Bhandari, International Court of Justice and Former Judge of Supreme Court of India as the Chief Guest.

The University conferred the Honorary D.Sc. (Honoris Causa) to Justice Dalveer Bhandari on this occasion. Justice Dalveer Bhandari distributed the degrees to 1394 graduates. In the ceremony 30 gold, 28 silver and 27 bronze medals were awarded to the top rankers of the University Fifteen Ph.D. Degrees were also conferred on this occasion.



TRAINING & PLACEMENT

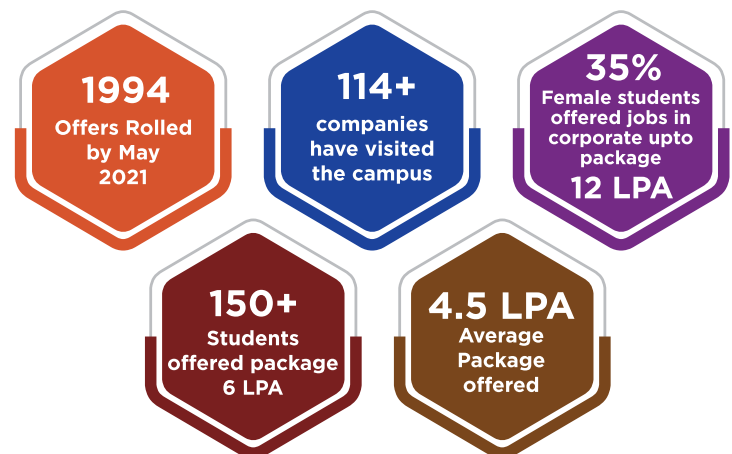
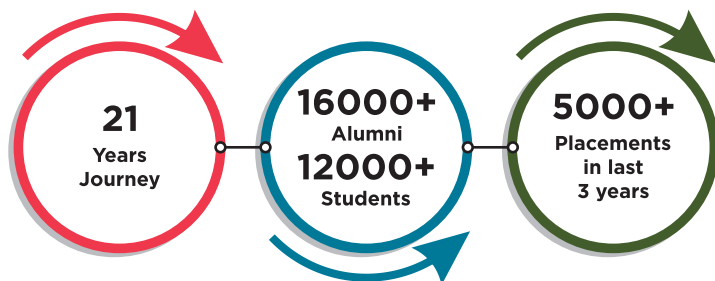
Corporate connect plays a crucial role in training & placement cell of any institution, providing multiple & versatile career opportunities for Graduates and Post Graduates passing out by keeping in touch with reputed firms and industrial establishments. The Corporate Connect program is a strategic initiative under taken by the JECRC Foundation to integrate various facets of real-life corporate experiences into the curriculum. As a part of the Corporate Connect program multiple hierarchy level executives, entrepreneurs and eminent industry experts from various fields and industry sectors are invited to share their practical experiences in the context of theoretical discourses the students have undergone. This not only helps students to take their learning out from the class room to apply it in real life but also increases their employability quotient by mentoring them to have an application and performance-driven mindset.

CORPORATE CONNECT



In a motto to ensure placements of students appearing in campus drives we conduct pre-placement training in a form of Campus Recruitment Training (CRT) Programs for all the schools (Engineering, Computer Application, Commerce & Management, Sciences, Design, Hotel & Hospitality, Journalism & Mass Communication, Law and Agriculture). CRT is specially designed for 200 hrs program which covers all the pre required training specifications by various companies in their selection process which covers Aptitude, Technical, Communication skills assessments. We conduct offline sessions by experts of industry, topic and company specific on/off line Tests, Mock sessions for Technical & HR Interviews, Group Discussions & Presentations. In addition to engineering and management, we design extraordinary sessions to develop hone skills & grooming personally and professionally to place students of new schools which cover Design, Hotel & Hospitality, Mass Communication and Law school.

The number of students placed through campus recruitment is continuously rising. On invitation, many reputed industries visit the institute to conduct the placement process. **We have been successful in maintaining our high placement statistics over the years and the fact that our students bear the recession blues with record-breaking placements itself is a testimony to our quality.**





C-Cube Cell - a specially focused cell for Competition Based Hiring and preparing students for various institutional, national and international level Hackathon and coding contests etc.

New School of Placement Cell—an initiative focused to internship cum placements for students of school of Design, Hotel & Hospitality, Journalism & Mass Communication, Law and Agriculture. The cell helps to create an Eco system by organizing various workshops, events, floor activities, interaction with experts from industry, visit to various places, portfolio design etc leading to projects and internships cum placement offers.

This year JECRC Foundation has successfully hosted companies covering all the verticals such as Service provider, Information Technology, Consulting, Product Design & Manufacturing, FMCG, Banking, Real Estate, Education, Management, Hospitality, Mass Media, Architect firms i.e. Accenture, TCS, HP, Mindtree, SopraSteria, Hexaware, ATCS, IBM, L&T Infotech, Tata Power, Pinnacle InfoTech, Deloitte, Vodafone Idea Ltd. ,Jaro Education, BYJUs, Extramarks, Infosys, Wipro, E&Y, ZS Associates, Hotel The Lalit, Crowne Plaza, Marriott, INOX Group, India Today, TV18, Rajasthan Patrika, Dainik Bhaskar, India News, AU Small Finance Bank, Cult.fit, Hiren Patel Architects, Shantanu Garg Designs, Kredenza Interior Studio etc.

Following are some of our recruitment partners:

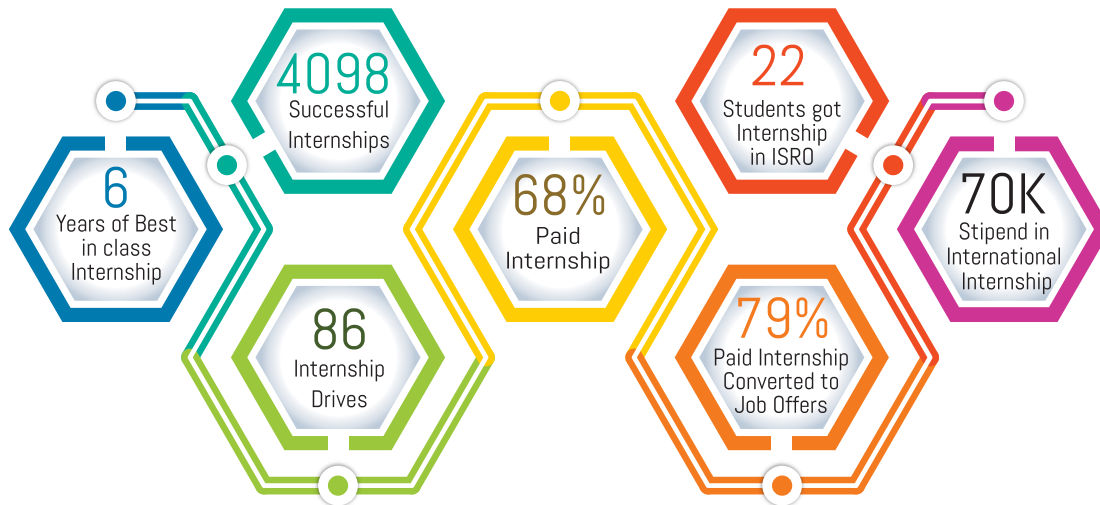
- Tata Consultancy Services
- Nokia-Siemens Networks
- Asia Motor Works
- Taj Group
- Tata Technologies
- Essar Steel
- Uttam Galva (Steel)
- Surya Roshni Ltd.
- Patni Computers
- STG International Inc.
- LG Electronics
- L&T India
- Infosys Technologies
- Jindal Steel
- Reliance Industries Ltd.
- Sona Koyo Steering
- Goodricke Precise
- Wipro Technologies
- Zensar Technologies
- Bosch India Ltd.
- Unique Builders
- JCB India Jaipur
- Caparo Corporation
- Honda Motorcycle Pvt. Ltd.
- Persistent Systems
- Capital IQ
- Bajaj Capital
- Godrej & Boyce
- Sriram Fertilizers & Chemicals
- Huawei Telecom
- Asian Paints
- Birla Cement
- Shriram General Insurance
- Dainik Bhaskar
- HDFC Bank
- Dabur Onquest
- ICICI Prudential
- Indian Immunological
- Kamdhenu Steels
- Coulera Technologies
- Cipla
- Reliance Jio Infocom Ltd.
- Tech Mahindra
- A3Logics
- Maruti Suzuki India Ltd.
- J K Cement
- Amol Pharmaceuticals
- Pfizer
- Sahara India
- Ahlcon Parenterals
- Fiserv India Ltd.
- Genus Overseas
- Reliance Money
- Reliance Insurance
- Videocon
- Mahindra & Mahindra
- ITC Ltd.
- Adani Group
- Tecnimont ICB Ltd.
- Appirio
- Pinnacle Infotech
- Sopra Steria
- Ericsson
- Wipro
- Capgemini
- Syntel Inc.
- Hexaview Technologies
- Hewlett Packard

INTERNSHIP

Seeing current situation of the market, where there is cut throat competition and that one can attain success only by gaining practical experience and exposure, JECRC University has introduced Internship program for all its final year students. Internship not only integrates knowledge and theory learned in classroom with practical application but also empowers interns by developing much solicited skills in professional setting.

JECRC University believes in 360° development of its students and to give them a competitive edge in a world of rising global competition for a talented and innovative workforce, we have adopted experimental learning in the form of internship. JECRC University firmly believes in importance of Internship as there is no substitute for experience.

This year, due to covid-19, evaluation of the internship was conducted online by domain specific panel of industry experts from renowned companies.



Our Recruiters:

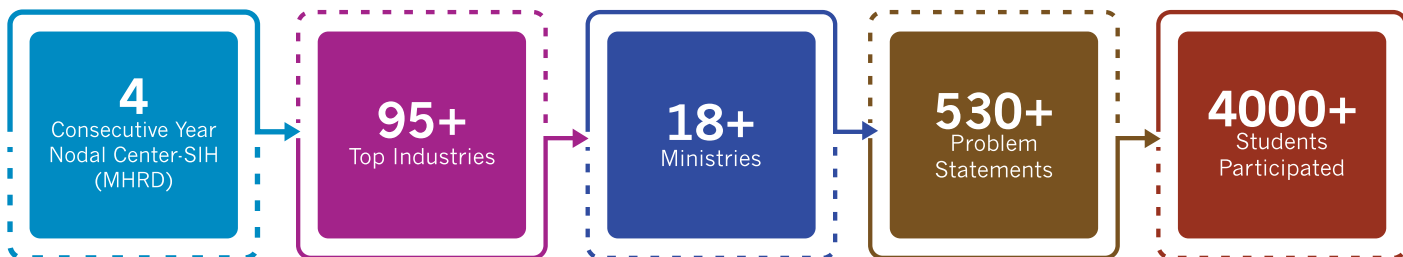
HACKATHON

Smart India Hackathon is a unique Open Innovation model that brings the young minds, experts, academicians and industry together to solve nation's daunting problems. It is a non-stop digital product development competition, where problems are posed to technology students for innovative solutions. It harnesses creativity & expertise of students, sparks institute-level hackathons, builds funnel for 'Startup India' campaign, provides opportunity to citizens to provide innovative solutions to India's daunting problems.

Hackathons provide students a platform to solve some of the pressing problems we face in our daily lives, and thus inculcates a culture of product innovation and a mindset of problem solving. It is a matter of Pride to announce that JECRC foundation has hosted Smart India Hackathon consecutively 4 times as one of the Nodal Center in India.

The fourth edition of the world's largest hackathon SIH-2020 was in virtual mode due to pandemic. JECRC university was a proud recipient of one Nodal Centre for Ministry of Women and Child Development where 26+ teams having 5-8 participants in each team will be contesting from throughout India through a virtual medium.

JECRC is the only Institute in Rajasthan to have been shortlisted as the nodal centre for conducting the Grand Finale of Smart India Hackathon-2017, 2018, 2019 and 2020. Over 500 students of 50 teams and 25+ Ministry officials, judges and technical officers from all over the country came to JECRC campus in each year.



Grand Finale of Smart India Hackathon 2020, Software Edition on Aug 1st-2020 was graced by our Guest of honour Mr Pankaj Jhunja, Head of mobility service, Tata Motors and Mr Vinay Kumar, Partner Group engineer Manger, Microsoft. During the Hackathon coding session Honorable Prime Minister Narendra Modi Ji interacted virtually with participants at JECRC University. PM Modi asked them questions and the students answered magnificently. The Valedictory Ceremony on 4th Aug-2020 was graced by the presence of Chief Guest, Mr. Venkatesh Sarvasiddhi, Senior Head- Digital Skills, Innovation, Industry Partnership & CSR, National Skill Development Corporation (NSDC). One of JECRC University Team Phoenix, All girls Team of CSE Department won first prize of one lakh rupees and solved the problem under the Ministry of Power at New Delhi Nodal centre. This achievement of the team is the result of 36-hours of amazing efforts and dedication. JECRC University is proud of the team and Vice chairperson Shri Arpit Agrawal Sir congratulated and awarded all 6 girls students for their achievement.

PROGRAMMING & CODING @ JU



JECRC Foundation has made a fantastic ecosystem of Hackathons at JECRC campuses where more than 15+ Hackathons/coding contests have been organized in last 4 years. All the projects developed are solving social issues of the society. These Ideas and innovative solution of the students are nurtured in JECRC Incubation Cell. JECRC University is committed to build a strong eco system for nurturing innovations and Startups. Students are benefitted by their interaction with judges, mentors and industry/Ministry officials; also they get motivation to build good products. All the events were mesmerizing and their memories and experiences are wonderful.

Hackathons in JECRC Foundation in Last Four Years

- Nodal Centre of SIH: 4 Times
- Total Teams /students selected for Grand Finale of SIH: 25 teams 150 students
- Ministry and AICTE officials visited: 100+
- Total Problems solved: 300+
- Total Ideas Submitted: 1000+
- Students Participated in different Hackathons (internal/external): 4000+
- Students from Different Institutes Visited JECRC: 100+ Institutes
- Students participated in Internal Hackathon (JU HackQuest) : 2000+

CODE WARRIOR

The basic idea of this initiative is to develop a coding ecosystem in our campuses and to make every student passionate about competitive programming. This includes all-round development in technical and core subjects and boosts the overall performance of JECRCians in the upcoming competitions. The knack of programming not only drives one to the best Internship opportunities but also help one to grab the better placement opportunities in the product based companies like **“FAANG” (Facebook, Apple, Amazon, Netflix and Google)** and startups with packages ranging 10 LPA and more.

In 2020, JECRC University conducted an internal test in collaboration with Code Chef for 3000 students and selected 300 out of them and provide them special high quality training of 150 Hours by Industrial experts in MoU with the world top class coding Hubs like Geeks for Geeks, Coding Ninja Code Chef, Git Hub and many more on Coding and Data structure in Collaboration with Hacker Rank.



10 LPA

Startups
packages
ranging

100+

Students got
average package
6 LPA in product
based companies

150 Hour

Quality Training
by industrial
experts

300+

Student selected
for industrial
training

JECRC INCUBATION CENTRE (JIC)



In modern times startups are the most important change required in the country.

JECRC Incubation Centre is promoting the culture of innovation and entrepreneurship among students and faculties to develop the robust entrepreneurial ecosystem in the country by mentoring young innovators and empowering them with the **21st-century skills** of critical thinking, design thinking, collaboration, and latest technologies. We are providing a real and viable alternative path to improve employability.

JECRC Incubation Center (JIC) is an integral part of JECRC University, which supports entrepreneurs early and helps them create commercially viable and scalable businesses. JIC fosters an entrepreneurial culture around academics, research, and innovation.

JECRC Incubation Centre is the first academic incubator in the state of Rajasthan with a well-defined Startup Policy for Students. The policy is designed with the core objective to support and enable innovative ideas to turn into successful startups. According to policy additional benefits will be given to incubated startups. (For mature and operational startups) and all the requisite facilities will be provided like structure Mentorship, Co-working space, Industry Connections, and Financial Assistance.

Recognition:

Recognized as one of the only twentyGroup 2 Centre (G2C) in India by Ministry of Electronics & Information Technology, GOI under TIDE2.0 Scheme.

Recognized as "Most Promising Academic Incubator in India" by Asia Today Research & Media

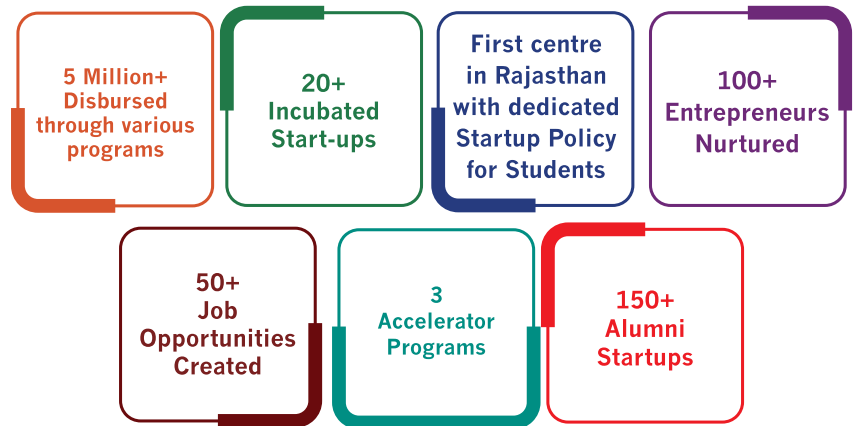
Partners of JIC

Digital Impact Square (DISQ), A Tata Consultancy Services Foundation Initiative

Digital Impact Square (DISQ) is an open social innovation center - in the city of Nashik, Maharashtra. DISQ encourages innovation using digital technologies to address social challenges prevalent in Health and Hygiene, Housing and Transportation, Food and Agriculture, Energy, Water and Environment, Financial and Personal Security, Citizen Empowerment and Transparency, Education and Skills development across India. Through this partnership JIC supports Early-stage startups to scale their innovation and to create a sustainable & scalable Social Start-up.

TIE Rajasthan

TiE Rajasthan is the premier entrepreneurship promotion organization of Rajasthan active in areas of educating, mentoring,



networking, incubating and investing in innovative startups since year 2002 in Rajasthan. Over 200 members of TiE Rajasthan represent different sectors of the industry and are working towards a common goal of fostering entrepreneurship. JIC has partner with TiE with the motive to build a robust startup ecosystem in Rajasthan.

Headstart

Headstart is one of India's oldest and largest startup ecosystem development organizations. They have been chasing the vision 'changing the world with entrepreneurship' ever since. It is a not-for-profit organization, almost entirely volunteer driven! JIC has collaborated with Headstart to aware and sensitize young student about entrepreneurship.

Technology Incubation & Development of Entrepreneurs (TIDE 2.0)

Ministry of Electronics and IT, (MEITY) India, selected JECRC University as one of the prestigious TIDE centers across the country, and the first one in Rajasthan. Under the TIDE grant program, we were given a great opportunity to scout, shortlist, and select the unique and innovative startups in their line of business. So far we have already disbursed over INR 44 lakhs in form of a grant to 08 startups. In the current TIDE 2.0 grant program, we have received an overwhelming response from startups across the country.

E-CELL

JECRC University Entrepreneurship Cell is a non-profit student organization dedicated to promoting the spirit of entrepreneurship among students. In the process of identifying, nurturing, training and establishing start-ups, E-CELL is involved in a wide range of activities. E-CELL is a part of the JECRC Incubation Centre.

“For the students, By the students”

Our Vision is to develop, enhance and carve out the inner entrepreneurial potentials of students and foster the thinking of entrepreneurship among them.

We build an interactive atmosphere among major components spanning students, aspiring and existing entrepreneurs, investors, mentors, through initiatives, interactive sessions and competitions etc.



ALUMNI ASSOCIATION

At JECRC University, we work to build a lifelong bond with the students and to support this motive, JU Alumni Association works to serve as a bridge between the Alumni and the University. We provide diverse and quality networking for Alumni in addition to opportunities for them to build a network of friends with over thousands of alumni who have achieved great success in their careers.

The objective to form the JU Alumni Association is to transform the idea of life from the individualism to unification and to create the opportunities where the alumni can contribute and share seamlessly. The vision is to help the fellow members, share and influence, with what they have achieved and can do.

Currently, we have 4000+ alumni placed globally and for them we offer professional and personal support such as professional networking events and career services, continuing education opportunities, and use of campus facilities.

Our alumni act as a mentor for the current students and provide them right knowledge and skills., as well as help them to get placed in MNC's. Alumni entrepreneurs help to foster student entrepreneurship because they understand the current entrepreneurship ecosystem at our institute and help them to launch their careers.

The importance of alumni network for professional networking and career growth has come to life during the covid-19 pandemic. Even during the pandemic our alumni helped us through the online platforms. Some alumni contributed their presence in various events like Alumni Annual Meet, Alumni Mavericks Club Meet, Alumni Entrepreneurship Meet, Alumni Zarurat Meet, Alumni Meet and Greet, Alumni Founders talk.

Many of the Notable Alumni are invited for judging many events, while many of our alumni are walking down the path of being entrepreneurs. They are now recognized as job creators in the industry with more than 50 start-ups established rather than job seekers while achieving the best of their endeavors.

The Alumni Association has a portal where alumni can get registered themselves at www.jualumni.in and get benefitted by having all the updated information, Job Opportunities, other guidance for their overall growth.



MAKERSPACE

MAKERSPACE is a trending concept in India which gives brilliant minds space and equipment to help them turn their groundbreaking ideas into reality. The very first makerspace in Rajasthan is now open in JECRC University and was inaugurated by Mr. Hasit Kaji, Vice President, TCS on 16th August 2018. JU MAKERSPACE is collaborative work areas packed with equipment and tools where students with a bend for invention and innovation can come together under one roof to build, design, create and engineer new things, products, ideas etc.. JU MAKER SPACE University has equipped with latest technology Big 3 D Printer at STI Hub JU and It can print objects of size 1 meter X 1 meter X 1 meter (1 meter cube) and all tools and equipment such as rare digital oscilloscope, common ICs and transistors are available.

In JU Makerspace students work on many different things like 3D modeling, 3D printing, aero modelling, Robotics, electronics, Wood working, Art, Prop Making, etc. The best part is that in JU Makerspace the only limitation to a student is his own imagination.

Achievements/ Events / Activities

JU Makerspace took various initiatives to organize a number of events like :

- ➔ “3D PRINTING WORKSHOP” for in-house Faculties & Staff.
- ➔ “MINI-MAKER CARNIVAL”
- ➔ JU Makerspace organized online workshop “**Summer with Makerspace**” during lockdown period in which JU Makerspace conducted a series of free online workshops on the technologies like Python, Arduino, Machine Learning, Web Development, 3-D Printing, Control Algorithms.
- ➔ **JU Makerspace and JU ECell**, conducted Ideathon 2021, which was held exclusively for First year students. The purpose of Ideathon was to keep innovation and entrepreneurship running in novice minds. In this event, 300+ JECRC freshmen participated to showcase and present their innovative ideas.

JU- Makerspace has tied up with 'Makers Lab', an initiative by Tech Mahindra. The tie up would strengthen JECRC students with latest and prevailing technological skills like Agritech, Defense, IOT, and AI/ML.

Amid pandemic 2020, JU Makerspace launched #Save_The_Saviours Initiative which was applauded by Hon'ble CM of Rajasthan, Sh. Ashok Gehlot on his social media handles. In the initiative JU Makerspace had committed itself towards manufacturing 5000+ face shields for hospitals of Delhi NCR to help our doctors, paramedics & sanitation workers so that they protect them from infection as they fight it out on the frontline.

During Covid-19 Pandemic in month of April 2021, JU Maker Space students have made two significant innovations to solve the problem of social distancing and wearing a mask namely Social Distance Badge Face Mask Detector. This work was much-admired and published in Rajasthan Patrika Newspaper and run in various National News Channel Like **ABP News, News Nation, News 18 and ETV India..**



JECRC realized the changing technology dynamics in the industry, which is influenced by different factors like need of solutions for unsolved technical problems, changing characteristics of the social environment etc. As a next step, in order to empower our students with the latest & prevailing technological skills, we have collaborated with several industry leaders like Microsoft, Google, Tech Mahindra, TCS, IBM, EC Council, ASSOCHAM, Xebia, Samatrix, Automation Anywhere, UiPath, Adobe etc. Through these collaborations, we could not only get the industry experts on board, which is otherwise difficult to deploy for the education ecosystems, but also attained enhanced innovation through knowledge exchange.

GLOBAL INDUSTRY COLLABORATION



IAESTE LC JECRC

With the increasing globalization the world is achieving with each passing day, the field of higher education also requires global exposure. We need to develop a global approach that can address the issues pertaining to scientific discovery and encourage a mechanism to work collaboratively to produce the maximum output of the educational and training efforts by all the different universities around the globe. Recognizing the need to mark our global presence, JECRC University established a Global Outreach Cell comprising of the experienced and internationally recognized academicians dedicated to meet the global challenges working collaboratively so as to effectively train the future scientists and engineers of the nation. As businesses go global, so does the need to find the talent well versed in the multicultural environment in order to effectively learn and work in manufacturing and research enterprises located in different countries. Below mentioned are few students already pursuing their career abroad:

INTERNATIONAL EXPOSURE



Introduction

The International Association for the Exchange of Students for Technical Experience, Association sans but lucratif (non-profit association), commonly known as IAESTE. It is an independent association of national committees representing academic, industrial and student interests. IAESTE provides students with the opportunity to work with employers having highly skilled, motivated trainees for long or short term projects and has helped over 300,000 students of science, engineering, technology and applied arts subjects to gain valuable international work experience in over 90 member countries. IAESTE India currently has 4 Local Committees including IAESTE India LCJECRC.

Exchange Statistics

Session 2013-14

Incoming-00
Outgoing-02

Session 2015-16

Incoming-08
Outgoing-02

Session 2017-18

Incoming-28
Outgoing-17

Session 2019-20

Incoming-01
Outgoing-03

Session 2014-15

Incoming-11
Outgoing-09

Session 2016-17

Incoming-24
Outgoing-15

Session 2018-19

Incoming-21
Outgoing-12

Total Exchange up till -153

RESEARCH CULTURE

“Expending Minds with Research”

Research is not an option at JECRC University, Research is the soul here. Research has imbibed with each of the academic initiatives at JU and perfectly reflects the deeply rooted culture. That is to nurture through the strong intent to serve the society with better solutions. No wonder only 52 Ph.D degrees are granted so far at JU. The reason behind the precise pace of research is to let it get thoroughly reviewed by the experts and let it strengthen the future scope of research in the field.

“High Quality Focused Research”

Since its inception JECRC University is on a strong mission to support the high-quality, objective research and analysis on issues at the top of the national and international policy agendas. We, at the JECRC University are proud of that reputation, we build through which we have focused research agenda. We are also proud of the ways and means by which we have ensured that our research outcomes and solutions that reflect our core values of quality and objectivity.

Quality research at university is part of a programmed plan to develop, organize, and execute a research agenda that might include creating collaborations within or across disciplines, mentoring students, creating and leading centers, or building toward larger or systemic questions.

Independent of the means or venue of dissemination, it is a mandate for the researchers at JU to develop a clear vision about the research areas and its impact in the discipline and, potentially, on the world in the long run. Impact could be assessed by the contribution to the field in the form of citations, commercialization including patents and licensing, or other signs of attention. Impact in the world may be the most difficult task to measure but ultimately is the most important aspect. The value of research is that its impacts lives (both directly and indirectly).

IPCURATE LAB @ JECRC UNIVERSITY

JECRC University has installed IPCurate Lab in its campus to protect the IP generated in the university by its various stakeholders. IPCurate lab provides a guidance and assistance in terms of patentability search, filing an application, early publication and grant support. IPCurate Lab is committed to encourage, protect, manage and commercialize Intellectual Property such as Patent, Copyright, Trademark etc. generated by the faculty and students both. The IPCurate Lab creates conducive environment in the academics for the development of Intellectual Property. Faculty and students of JECRC University are actively participating in the IPR filing process in different disciplines of academic fields.

RESEARCH



JECRC University has received sponsored funding of INR 10 Cr from the prestigious agencies of GOI like DST-Delhi, DST Rajasthan and Meity through 10+ projects in last two years.

To develop and protect the intellectual property JECRC University fully sponsors the process of R&D and patent like by academicians and students through IPCurate Lab, JU

To foster a rich research culture JECRC University has a well written Research Incentive Policy to felicitate the academicians and research scholars with incentives of worth INR 1 Cr.

JECRC University offers doctoral research in 25+ domains and facilitates with state-of-the art research labs and infrastructure

The University has 800+ Research Publications in high impact factor national and International Journals

Student Council: Voice of Students

"Service with Pride, Lead with Confidence and Inspire to Impact Lives" With this aim Student Council is leading the students since years, with the motive of effective and adaptive enhancement of students in the University Student Council being the "Voice of Students" work on the way of holistic growth of every student of the University. Student council works under the Student development office.

CLUB @ JU

Catchy Cultural Club	Abhivaykti The Theatre Club	The Vogue: Fashion Club
Literature Club	Maker Space	Masterchef Club
Maverick Club Media Club	Terra Club	Quintessence Crew The Dancing Club
Swaraag The Music Club	Developer Student Club	Microsoft Learn Student Ambassadors
The Amazon League JU	Code Chef	Coding Ninjas
IEEE COSEC	Google Crowsource	JU- Makerspace

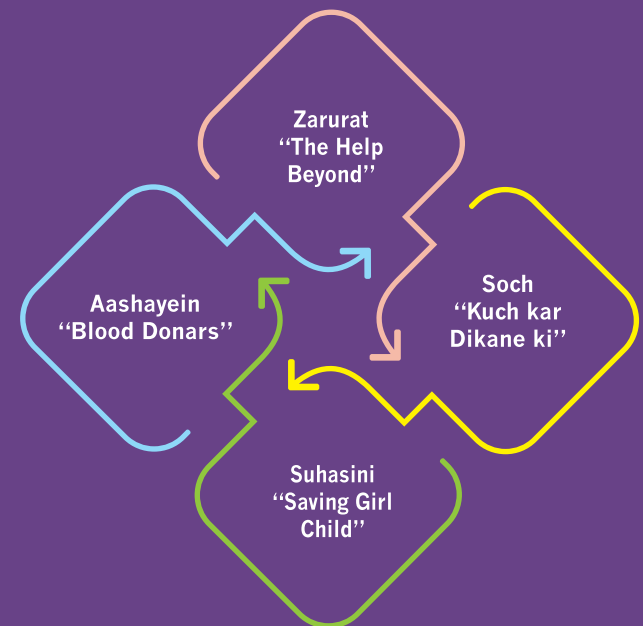
EVENTS & ACTIVITIES

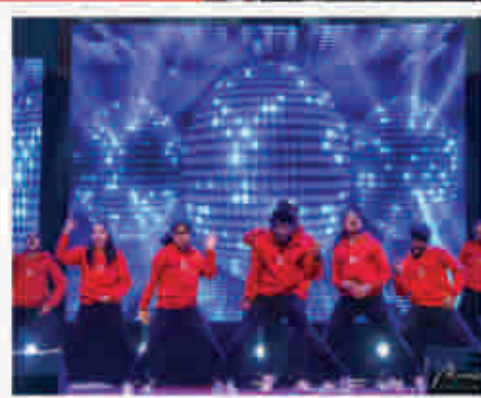
Student Leadership Development Initiative	ISRO Exhibition	Protsahan "Techno Scholastic Festival"	RHYTHM "JU Techno Business Cultural Fest"
JU Verve-Inter Collegiate Sport Fest	Formation of Student Council 2021	Manikarnika-Self defence workshop on women's day	Skillshala School Connect
RAAG-Let Your Heart Sing	Career Options After Class 12th	National Science Day	Online Yoga Sessions
Wonder of Words "WoW" Literary Extravaganza	Weekend Blast, D-vibe	Ju Eagles Intra University E-sports Championship For Cs-go	

STUDENT EXPOSURE



ABHYUDAYA (SOCIAL INITIATIVES)





YOUR HOME AWAY FROM HOME

RESIDENTIAL FACILITIES

In campus residential facility for students has been very thoughtfully designed and planned. Each unit in the JU Hostel Complex allows privacy and personal space to a student while giving a chance to live together and foster comradeship. Just as in apartment, three / four private, single occupancy rooms open into a common living room equipped with a television set (optional in AC rooms), internet access. The hostels are air-conditioned, comfortable and conducive for the students to have a productive campus life, providing a perfect setting for academic pursuits.

Hostels are provided by the University for the Convenience of students. In order to ensure proper utilization of the hostels and to maintain the facilities for comfortable and orderly life for the students in the hostels, there is need to lay down rules and regulations for the hostels. This document lays down these rules and will be called “Rules and Regulations for JECRC University Hostels”.

Separate hostels are maintained for boys and girls. The mess and dining facilities may be common. All students will adhere to the Hostel rules and regulations.

Hostel rules & regulations are available on JECRC University website at the link : www.jecrcuniversity.edu.in



INFRASTRUCTURE AND FACILITIES



SPORTS FACILITIES

JECRC University houses a wide variety of intramural sports, which are available for graduate students, faculties, and staff members. It fosters physical development through various indoor and outdoor sporting activities. Sports offered are Football, Basketball, Volleyball, American football (tackle & flag), Cricket, Badminton, Table tennis, kabaddi, chess etc. Further University also has well equipped gymnasium, which paves the way for healthy lifestyle for the students. .Numerous sports activities are conducted in the total area of 35000 sqm. Partaking in sporting activities has left for the students - skills for a lifetime. Skills sharpened for the student outside the classroom, are abilities which include - leadership, teamwork, responsibility and respect. The five Ss' of sports training are: stamina, speed, strength, skill, and the greatest of course is spirit which undoubtedly keeps the JECRC teams going. The university conducts a national sports event “JU VERVE” in order to enhance and acquaint the capabilities of hidden athletes. Additionally, numerous individual national collegiate championships have been won by a variety of athletes. Students are trained to compete in intercollegiate, state and national events by the experienced coaches. The university encourages and imparts game awareness to those interested in specific sports through professional guidance and coaching.

MESS & CAFETERIA

Students Mess next to the hostel complex offers excellent multi-cuisine food to the campus residents. The centrally air-conditioned dining area is supported by Kitchen, Mess and Cafeteria. The complex also envisages to house convenient stores to meet the daily needs of the residents. The residential facility is comfortable enough to ensure that students don't feel that they are away from home.

TRANSPORT

The University has its own fleet of buses for the students and faculty which covers the entire city of Jaipur. The campus is well connected to all parts of the city through public transport and has close proximity to other urban conveniences.

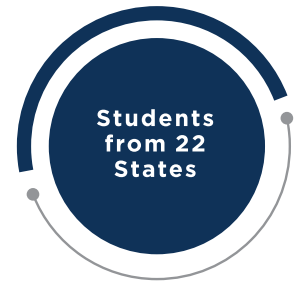
CENTRAL LIBRARY

The Central Library is the academic lifeline of the University. The library is open for twelve hours a day and accommodates a large number of students in its reading and referencing halls. The University has gone ahead in making the concept of digital library functional with availability of digital content to enhance the first hand knowledge to students. A good collection of reference text-books and journals of national and international repute are available to the students. The library subscribes to both national and regional newspapers and magazines and journals for the benefit of students and general readers. The library, in addition to text books, caters to general reading and has a special section for books and journals for competitive examinations. The students have access to the online e-learning portal for integrated learning including NPTEL. This facility is provided to all the faculty members and students of the University.

COMPUTING LAB

JECRC University has some of the best computer labs, with the latest computing facilities and high speed internet connectivity. The University has 15 computer labs with over 500 computers and 25 MBPS 1:1 network. Also the University is under the initiative of NMEICT to connect technical education institutes through National Knowledge Network (NKN) with a high speed internet facility.

The University systems work with an ERP Technology backbone. The entire campus network is connected with the latest technological enabled servers and CISCO network equipments. The campus is Wi-Fi enabled.



MEDICAL FACILITY

The University has a first aid centre and has an arrangement with hospitals nearby. 24*7 JU ambulance is available to attend in case of emergency.



Faculty of Management - International Centre of Excellence (Courses Accredited by Professional Bodies)

JECRC University has partnered with ISDC – The International Skill Development Corporation to establish a distinguished International Centre of Excellence (ICoE) for offering Professional UG/PG Courses through the Faculty of Management. ISDC (International Skill Development Corporation) is a leading International Provider for British Education and Skills registered in United Kingdom (UK). ISDC has an access to 25 Professional Bodies in UK for their Market Expansion, Trans National Education and Growth. ISDC works with Universities and Higher Education Providers by Developing and Upgrading the Academic Degrees for Future to Seek External Accreditations / Memberships / Qualifications along with the University Degrees.

The International Centre of Excellence (ICoE) has been established to ensure that learners have a comprehensive understanding of the various global academic domains and certifications that are essential for them to stand out and meet the evolving industry standards. The Centre envisions to organize, converge and provide additional training to students to help them become self-reliant leaders with enhanced leadership characteristics. The Centre's numerous levels of Global Programmes are designed to assist students in gaining real world experience in various job roles to work in relevant industries. We offer the opportunity to participate in practical and integrated global programmes that are directly related to the industry. Our students earn highly relevant Global Qualifications that will aid them in their pursuit of further education or employment. Our programmes are designed to help our students to build Global Careers.

The International Centre for Excellence is an excellent choice for global education. Build on our unique teaching methods & out-of-class experiences, our students get a head start on their careers. Trained by industry experts who provide intensive, hands-on, and real-world knowledge each of our students is fine-tuned to be prepared for global career opportunities. ICoE facilitates various programmes at Undergraduate & Postgraduate Level most of which are externally accredited by relevant Global Professional Bodies which enable students to achieve additional Certifications, Qualifications and Memberships along with their Degrees.



Course & Duration	Specialisations	External Professional Body Accreditation	Tuition Fee	Other Fee	Annual Fee	First Semester + Alumni & Admission Fee at the time of Admission
B.Com (Hons) 3 Years	International Finance & Accounting	ACCA - Association of Chartered Certified Accountants	65000	35000	100000	60000
	Finance & Analytics	IoA- Institute of Analytics				
	Management Accounting	CMA - Certified Management Accountants				
	Financial Markets	IFM - Institute of Financial Markets				
	Logistics & Supply Chain Management	—				
BBA (Hons) 3 Years	Finance & Leadership	CIMA - Chartered Institute of Management Accountants	84500	45500	130000	75000
	Financial Markets	IFM - Institute of Financial Markets				
	Digital Business	AI Society International				
	Business Analytics	IoA- Institute of Analytics				
	Digital Marketing	DMI - Digital Marketing Institute				
	Logistics & Supply Chain Management	—				
MBA 2 Years	International Finance	ACCA - Association of Chartered Certified Accountants	140000	60000	200000	110000
	Finance & Leadership	CIMA - Chartered Institute of Management Accountants				
	Digital Business	AI Society International				
	Business Analytics	IoA- Institute of Analytics				
	Financial Markets	IFM - Institute of Financial Markets				
	Digital & Strategic Marketing	DMI - Digital Marketing Institute				
	Logistics & Supply Chain Management	—				
M.Com 2 Years	International Finance & Accounting	ACCA - Association of Chartered Certified Accountants	63000	27000	90000	55000
	Management Accounting	CMA - Certified Management Accountants				

- ➔ One Time Alumni and Admission Fee: Rs. 10000/- (Non Refundable) at the time of Admission in all courses.
- ➔ Students have to pay the relevant Professional Body Fees over and above the JECRC Fees to achieve the Additional Certifications / Qualifications /Memberships.
- ➔ **Scholarship for UG Courses: B.Com (Hons.), BBA (Hons.)**
 - 20% Scholarship of Tuition Fee - aggregate percentage in 10+2 (80% to 89.99%).
 - 30% Scholarship of Tuition Fee - aggregate percentage in 10+2 (90% to 100%).



CORPORATE SPECIALISATION COURSES DETAILS



B.Tech./ BCA/ MCA (Cloud Computing)

Microsoft- JECRC University has entered into an Agreement with this world's leading IT Company, which enables us to offer joint degree programs in the technology of **Cloud Computing**. Hands-on experience and certification with Microsoft technology skills to land leading tech jobs for the students.



B.Tech. Computer Science & Business System (CSBS)

TATA Consultancy Services (TCS) -JECRC University is the only University in the state of Rajasthan to offer a 4 Year B.Tech Program in association with TCS. This curriculum designed by TCS aims to ensure that the students graduating from the program not only know the core topics of Computer Science but also developed an equal appreciation of humanities, management, sciences and human values.



B. Tech./ BCA/ MCA/ BBA/ MBA (AI&ML; IOT; Big Data; Cloud Computing; Business Intelligence; Data Security; IT Operations)

IBM - Through collaboration with IBM, which is the first of its kind in the country, our students have access to a wealth of resources on IBM's Learning Management System. Students will be able to get joint degree in the field of Artificial Intelligence & Machine Learning, Data Science, IOT and many more with certifications.



B.Tech./ BCA (Full Stack Web design; AI&ML; DevOps)

Xebia is a pioneering IT consultancy company, and delivers high-quality services to cover all aspects of digital transformation. Highly expertise trainers will train the students in the domain of AI & ML, DevOps and Full Stack Web Development.



B.Tech./ BCA/BBA/MCA/MBA (AI&ML; Data Science-Analytics-Visualization)

Samatrix Consulting is led by IIT Kharagpur, IIM Ahmedabad alumni with rich corporate experience of over 20 years with Intel and Tata Steel. The core team of Samatrix includes seasoned professionals with diverse educational background. It includes alumni from IITs, IIITM and other technical and business streams. This is a full time specialization program in the domain of AI& ML and Data Science.



B.Tech./ BCA/ MCA (Cyber Security)

EC-Council was founded in 2001 by Jay Bavisi in response to the September 11 attacks to certify professionals who could protect against attacks on electronic commerce. It launched the Certified Ethical Hacker (CEH) program for white hat hackers in 2003. It is a full time specialization program along with certifications in ethical hacking.

Specialisation	Course	About Course
Cloud Computing (Microsoft)	B.Tech./ BCA/ MCA	The practice of using a network of remote servers hosted on the internet to store, manage, and process data, rather than a local server or a personal computer.
Compute Science & Business System (CSBS)-(TCS)	B.Tech	This curriculum aims to ensure that the students graduating from the program not only know the core topics of Computer Science but also develop an equal appreciation of humanities, management sciences and human values. The students are also exposed to emerging topics such as Analytics, Machine Learning, Cloud Computing, Internet of Things etc to make them industry ready at the end of four years of study.
AI & ML (IBM/ Xebia/ Samatrix)	B.Tech./ BCA/ MCA	Machine learning is an application of artificial intelligence (AI) that provides systems the ability to automatically learn and improve from experience without being explicitly programmed. Machine learning focuses on the development of computer programs that can access data and use it to learn for themselves.
IOT (IBM)	B.Tech.	The internet of things, or IoT, is a system of interrelated computing devices, mechanical and digital machines, objects, animals or people that are provided with unique identifiers (UIDs) and the ability to transfer data over a network without requiring human-to-human or human-to-computer interaction.
Big Data & Data Analytics (IBM)	B.Tech.	Big data analytics is the use of advanced analytic techniques against very large, diverse data sets that include structured, semi-structured and unstructured data, from different sources, and in different sizes from terabytes to zettabytes.
Cloud Computing & Full Stack (IBM)	BCA / MCA	A full-stack developer is a type of programmer that has a functional knowledge of all techniques, languages and systems engineering concepts required in software development. The term "full stack" refers to the technologies and skills needed to complete a project, with each individual component being a stack.
Business Intelligence (IBM)	BBA	BBA Business Analytics is a specialised programme that is aimed to develop business analytics professionals for variety of industries. Business Analytics is a combination of Data Analytics and Business Intelligence. It is the science of analysing data to find out patterns that will be helpful in developing strategies.
Data Security (IBM)	BBA	Data security is the practice of protecting digital information from unauthorized access, corruption, or theft throughout its entire lifecycle
IT & Operations (IBM)	MBA	Students are trained to take on challenges in supply chain design, logistics and supply chain management. It also educates students ways and means of making processes or operating systems easier and efficient to use.
Full Stack Web Design and Development (Xebia)	B. Tech. / BCA	A full stack web developer is a person who can develop both client and server software. In addition to mastering HTML and CSS, he/she also knows how to: Program a browser (like using JavaScript, jQuery, Angular, or Vue)
DevOps Automation & Cloud Computing (Xebia)	B. Tech.	DevOps is the automation of agile methodology. ... DevOps' links with cloud computing are easy to define: The centralized nature of cloud computing provides DevOps automation with a standard and centralized platform for testing, deployment, and production.
Data Science & Data Analytics (Samatrix)	B. Tech./ BCA / MCA	Data analytics focuses more on viewing the historical data in context while data science focuses more on machine learning and predictive modeling. Data science is a multi-disciplinary blend that involves algorithm development, data inference, and predictive modeling to solve analytically complex business problems.
Data Analytics & Data Visualization (Samatrix)	BBA / MBA	Data visualization is the practice of translating information into a visual context, such as a map or graph.
Cyber Security (EC Council,USA)	B.Tech./ BCA/ MCA	Cyber security is the practice of defending computers, servers, mobile devices, electronic systems, networks, and data from malicious attacks. It's also known as information technology security or electronic information security

Programs @ JU

Programs Offered by Faculty of Engineering				
Program	Duration	Branches/Specialisations	Annual Fee	Eligibility
B. Tech.	4 Years	Computer Science & Engineering	1,65,000/-	Pass in Senior Secondary Examination (10+2) with minimum 50% marks in aggregate in all subjects with pass in English, Physics & Mathematics & one subject out of Chemistry, Biology, Biotechnology and Technical vocational subject from a recognised Board of School Education or equivalent. (Preference shall be given who has valid Score in JEE Mains 2021)
B. Tech.	4 Years	<ul style="list-style-type: none"> • Civil Engineering* • Electrical Engineering* • Electronics & Communication Engineering* • Mechanical Engineering* 	1,65,000/-	
B.Tech Computer Science and Engineering with Specializations	4 Years	<ul style="list-style-type: none"> • Cloud Computing (Microsoft) • DevOps Automation and Cloud Computing (Xebia) • Artificial Intelligence and Machine Learning (Xebia) • Full Stack Web Design and Development (Xebia) • Cyber Security (EC Council, USA) • Data Science & Data Analytic (Samatrix) • Artificial Intelligence and Machine Learning (Samatrix) • Computer Science and Business Systems (Collaboration with TCS) - CSBS • Artificial Intelligence and Machine Learning (IBM) • Internet of Things - IoT (IBM) • Big Data & Data Analytics (IBM) 	1,85,000/-	Pass in Senior Secondary Examination (10+2) with minimum 50% marks in aggregate in all subjects with pass in English, Physics & Mathematics & one subject out of Chemistry, Biology, Biotechnology and Technical vocational subject from a recognised Board of School Education or equivalent. (Preference shall be given who has valid Score in JEE Mains 2021)
B.Tech. Lateral Entry	3 Years	<ul style="list-style-type: none"> • Civil Engineering • Computer Science & Engineering • Electrical Engineering • Electronics & Communication Engineering • Mechanical Engineering 	1,65,000/-	(A) Passed Diploma examination from an AICTE approved Institution; with at least 50% in appropriate branch of Engineering / Technology. (B) Passed B. Sc Degree from a recognized University as defined by UGC, with at least 50% and passed 10+2 examination with mathematics as a subject. (C) Provided that in case of students belonging to B. Sc. Stream, shall clear the subjects of Engineering Graphics / Engineering Drawing and Engineering Mechanics of the first year Engineering program along with the second year subjects.
M.Tech.	2 Years	<p>Civil Engineering with Specialisation</p> <ul style="list-style-type: none"> • Structural Engineering • Transportation Engineering • Environmental Engineering • Construction Engineering & Management <p>Computer Engineering with Specialisation</p> <ul style="list-style-type: none"> • Artificial intelligence • Computer Science & Engineering • Data Analytics • Cyber Security • Cloud Computing <p>Electronics & Communication Engg. with Specialisation</p> <ul style="list-style-type: none"> • VLSI and Embedded Systems • Digital Communication <p>Electrical Engineering with Specialisation</p> <ul style="list-style-type: none"> • Power systems and Automation • Electrical devices and Power electronics <p>Mechanical Engineering with Specialisation</p> <ul style="list-style-type: none"> • CAD/CAM Engineering • Thermal Engineering • Production Engineering • Design Engineering 	70,000/-	B. Tech with minimum 55% aggregate marks in related discipline. Candidate with MCA/M.Sc. IT may also be considered for M.Tech in Computer Science.

* Freeship of 50% of tuition fee shall be given to students have more than 60% marks in qualifying exam in the program B.Tech: Civil Engineering, Electrical Engineering, Mechanical Engineering, Electronics & Communication Engineering.

Programs Offered by Faculty of IT & Computer Applications

Program	Duration	Branches/Specialisations	Annual Fee	Eligibility
BCA	3 Years	Bachelor of Computer Applications	90,000/-	Pass in Senior Secondary Examination (10+2) with minimum 50% marks in aggregate in all subjects with pass in English from a recognised Board of School Education or equivalent
BCA : with Industry Specialization	3 Years	<ul style="list-style-type: none"> ● Cyber Security (EC Council, USA) ● Data Science & Data Analytics (Samatrix) ● Cloud Computing & Full Stack Development (IBM) ● Artificial Intelligence & Machine Learning (IBM) ● Cloud Computing (Microsoft) ● Full Stack Web Design and Development (Xebia) 	1,10,000/-	Pass in Senior Secondary Examination (10+2) with minimum 50% marks in aggregate in all subjects with pass in English from a recognised Board of School Education or equivalent
MCA	2 Years	Master of Computer Applications	1,00,000/-	Minimum 50% marks in Bachelor Degree from a UGC recognised University with Mathematics either at Bachelor level or 10+2 level.
MCA : with Industry Specialization	2 Years	<ul style="list-style-type: none"> ● Cyber Security (EC Council, USA) ● Artificial Intelligence & Machine Learning (Samatrix) ● Data Science & Data Analytics (Samatrix) ● Cloud Computing & Full Stack Development (IBM) ● Artificial Intelligence & Machine Learning (IBM) ● Cloud Computing (Microsoft) 	1,20,000/-	Minimum 50% marks in Bachelor Degree from a UGC recognised University with Mathematics either at Bachelor level or 10+2 level.

Programs Offered by Faculty of Management

Program	Duration	Branches/Specialisations	Annual Fee	Eligibility
BBA	3 Years	Bachelor of Business Administration	1,00,000/-	Minimum 50% Marks in 10+2 examination from CBSE or equivalent
BBA	3 Years	<ul style="list-style-type: none"> ● Banking Financial Service & Insurance ● Tourism and Hospitality Management 	1,10,000/-	Minimum 50% Marks in 10+2 examination from CBSE or equivalent
BBA : with Industry Specialization	3 Years	<ul style="list-style-type: none"> ● Data Analytics & Data Visualization (Samatrix) ● Business Intelligence (IBM) ● Data Security (IBM) 	1,20,000/-	Minimum 50% Marks in 10+2 examination from CBSE or equivalent
B.Com	3 Years	Bachelor of Commerce	75,000/-	Minimum 50% Marks in 10+2 examination from CBSE or equivalent
MBA	2 Years	<ul style="list-style-type: none"> ● Human Resources ● Marketing ● Finance ● Information Technology ● Production & Operation Management 	1,25,000/-	Minimum 50% Marks in Bachelor Degree of three Year duration from a recognized University or equivalent And successfully qualifying GD-PI Process (Qualifying Exam CAT / MAT / XAT Preferred)
MBA : with Industry Specialization	2 Years	<ul style="list-style-type: none"> ● Data Analytics & Data Visualization (Samatrix) ● IT & Operations (IBM) 	1,45,000/-	Minimum 50% Marks in Bachelor Degree of three Year duration from a recognized University or equivalent And successfully qualifying GD-PI Process (Qualifying Exam CAT / MAT / XAT Preferred)
MSW	2 Years	Master of Social Work (HRM & IR)	80,000/-	Minimum 50% Marks in Bachelor Degree of three Year duration from a recognized University or equivalent. And successfully qualifying GD-PI Process

Programs Offered by Faculty of Hospitality & Hotel Management

Program	Duration	Branches/Specialisations	Annual Fee	Eligibility
B.Sc. in HHM	3 Years	Hospitality and Hotel Management	80,000/-	Minimum 50% Marks in 10+2 examination from CBSE or equivalent
BHMCT	4 Years	Bachelor of Hotel Management and Catering Technology	1,00,000/-	Minimum 50% Marks in 10+2 examination from CBSE or equivalent

Including 2 international certification per year through Coursera.

Programs offered by Faculty of Journalism & Mass Communication

Program	Duration	Branches/Specialisations	Annual Fee	Eligibility
BA-JMC	3 Years	Journalism & Mass Communication	95,000/-	Minimum 50% Marks in 10+2 examination from CBSE or equivalent
MA-JMC	2 Years	Journalism & Mass Communication	65,000/-	Minimum 50% Marks in qualifying examination

Including 2 international certification per year through Coursera.

Programs offered by Faculty of Science

Program	Duration	Branches/Specialisations	Annual Fee	Eligibility
B.Sc. (Hons.)	3 Years	Microbiology, Biotechnology, Forensic Science, Physics, Chemistry, Mathematics	75,000/-	10+2 with minimum 50% aggregate marks in related subjects from a recognised Board of School Education or equivalent
B.Sc. (Hons.)	3 Years	Data Science	70,000/-	The subjects should be Physics, Chemistry and Mathematics. Student has studied Computer Science as an additional subject, then it will be treated as a advantage.
B.Sc. (Pass Course)	3 Years	Three subject combination out of Physics, Chemistry, Maths, Botany, Zoology, Statistics, Psychology & Economics	60,000/-	10+2 with minimum 50% aggregate marks in related subjects from a recognised Board of School Education or equivalent
M. Sc.	2 Years	Microbiology, Biotechnology	80,000/-	B.Sc. with minimum 50% aggregate marks in related discipline from a recognised University.
M. Sc.	2 Years	Physics, Chemistry, Mathematics, Statistics, Botany, Zoology	65,000/-	B.Sc. with minimum 50% aggregate marks in related discipline from a recognised University.

Programs offered by Faculty of Humanities

Program	Duration	Branches/Specialisations	Annual Fee	Eligibility
BA (Hons.)	3 Years	English, Economics, Psychology, Political Science	65,000/-	Minimum 50% Marks in 10+2 examination from CBSE or equivalent
MA	2 Years	English, Economics, Psychology	70,000/-	Minimum 50% aggregate marks in B.A. in related disciplines from a recognized University

Including 2 international certification per year through Coursera.

Programs offered by Faculty of Law

Program	Duration	Branches/Specialisations	Annual Fee	Eligibility
Integrated Law	5 Years	B.A LL.B (Hons.) / B.Sc LL.B (Hons.) B.Com LL.B (Hons.) / BBA LL.B (Hons.)	1,05,000/-	Minimum 50% Marks in 10+2 examination from CBSE or equivalent (First Preference shall be given who have valid Score in CLAT 2021)
LL.M	2 Years	LL.M	75,000/-	Minimum 50% Marks in LL.B. three Year/five year from a recognized University or equivalent

Including 2 international certification per year through Coursera.

Programs offered by Faculty of Allied Health Science

Program	Duration	Branches/Specialisations	Annual Fee	Eligibility
BPT	4 Years + 6 Months Clinical Internship	Bachelor of Physiotherapy	65,000/-	10+2 (PCB) with minimum 50% aggregate marks in related subjects from a recognized Board of School Education or equivalent.
BMLT	3 Years + 1 Year Internship	B.Sc. (Bachelor of Science) Medical Laboratory Technology	65,000/-	10+2 (PCB/PCM) with minimum 50% aggregate marks in related subjects from a recognized Board of School Education or equivalent.
BRIT		B.Sc. (Bachelor of Science) Radiation and Imaging Technology		
BOTT		B.Sc. (Bachelor of Science) Operation Theatre Technology		

Programs offered by Faculty of Design

Program	Duration	Branches/Specialisations	Annual Fee	Eligibility
Bachelor of Design	4 Years	<ul style="list-style-type: none"> ● Interior Design ● Jewellery Design & Manufacturing 	1,15,000/-	Minimum 50% Marks in 10+2 examination from CBSE or equivalent.
Bachelor of Design	4 Years	Fashion Design	1,55,000/-	Minimum 50% Marks in 10+2 examination from CBSE or equivalent.
Bachelor of Visual Arts	4 Years	<ul style="list-style-type: none"> ● Graphic Design ● Painting Design 	85,000/-	Minimum 50% Marks in 10+2 examination from CBSE or equivalent.

Including 2 international certification per year through Coursera.

*Bachelor of Design	4 Years	*B.Des.	60,000/-	Minimum 50% Marks in 10+2 examination from CBSE or equivalent.
---------------------	---------	---------	----------	--

Note: *The B.Des. Course Curriculum is designed and developed by JECRC University, Jaipur with Gurukul School Of Design – 'Knowledge partner' for internship and industrial training. The GURUKUL SCHOOL OF DESIGN as -'Knowledge Partner' is a well known organisation having a reputed Board of Management, Qualified Faculty and state of the art Infrastructure. The students of B. Des. would take internship at Gurukul School of Design at an additional fee of Rs.5,40,000 p.a.+ taxes payable directly to the knowledge partner, i.e. Gurukul Faculty of Design. The merit scholarship not available for B. Des. Course.

Doctoral Program				
Program	Duration	Branches/Specialisations	Fee Structure	Eligibility
Ph.D.	Minimum Duration for Ph.D., 3 Years (As per UGC Norms) which is extendable for another 3 Years on Year to Year basis subject to satisfactory progress by the Research Scholar.	Engg. & Technology, Management, Commerce, Hotel Management, Journalism & Mass Communication, Physical & Life Sciences, Law, English, Economics and Psychology. More Disciplines may be added subject to availability of resources.	Admission & Registration Fee Rs. 25000/- Tuition Fee per year Rs. 50000/- Thesis Evaluation Fee Rs. 40000/-	Master's Degree (Related Discipline) with minimum 55% marks from a recognized University

Category Relaxation

5% relaxation in eligibility shall be permissible in all UG/PG Programs (Except Doctoral Programs) to the candidates belonging to SC/ST/Rajasthan State OBC-Non Creamy Layer and Women category.

Financial Support @ No Cost EMI

ZERO COST FEE LOANS BY MS FINCAP
ZERO COST FINANCE / EASY REPAYMENT



MS Fincap Private Limited is a Non-Banking Finance Company registered with Reserve Bank of India incorporated under the provisions of Companies Act, 2013. In collaboration with the JECRC University, MSFC is offering Fee Loan at No Cost EMI.

Features

- Zero interest rate loan.
- Collateral free loan.
- Transparent and hassle free application & approval process.
- Quick approval & disbursal – within 3 to 5 days*
- Loan upto 100% of academic fees.
- Tailor made repayment options- up to 10 No Cost EMIs.

Eligibility Criteria

- Student should be a permanent resident in the state of Rajasthan.
- Age of student's co-applicant should be minimum 21 years. Minor student can avail the fee loan facility through his/her guardian.
- Applicant/Co-Applicant should have a good credit score.
- Applicant/Co-Applicant's financials should support the proposed EMIs.



Contact us

At JECRC University- through our personnel present on the campus to assist you in the process.

www.edcred.in | info.edcred@msfincap.com | Mob. : 9166845335, 9700014666

Hostel Fees

Room Category	Per Annum Fee	One time non refundable utility fee (with first installment)	First installment at the time of admission (with one time Non-Refundable utility fee)	Second Installment *
AC Room	140000	5000	89000	56000
Non AC Room (Three Seated)	110000	5000	71000	44000
Non AC Room (Four Seated)	100000	5000	65000	40000

*Payable in October / November as per notification of University.

Note:

- One Time Security Rs. 5000/- with first instalment, Non-Refundable.
- One Time TV Charges Fee Rs. 5000/- (Optional in AC Rooms only: Non Refundable)
- Fee is being charged for 10 months only.
- Gymnasium fee: Rs. 1000/- Per Semester (Optional, Only for Hostellers)
- GST as applicable.
- If the hostel operations are suspended temporarily due to any reason beyond the control of the University authorities, the hostel fee will not be refunded. Example : Covid-19, any pandemic, curfew, etc., etc.

Transportation Fees

Transportation Fee	Per Annam Fee	First Installment at the time of admission	Second Installment*
Bus Fee	30000	18000	12000

*Payable in October / November as per notification of University.

Note:

- Fee shall be suitably revised in subsequent years based upon actual costs but not more than 10% per annum.
- Fee is being charged for 10 months only, i.e. two semesters.
- Bus facility is provided for two continuous semester. Hence, midyear withdrawal from bus facility is not permitted and no refund will be made against such withdrawal.

How to Apply

Application Form	Cost of Application form	Remarks
Forms can be filled online visit www.jecrcuniversity.edu.in Offline Forms also available at JECRC University Campus.	UG & PG Courses: Rs. 500/- Ph.D. Program Rs. 1500/-	Application form Fee not Refundable in any case.

For Important Dates Refer to JU Webstie: www.jecrcuniversity.edu.in



Online Application 2021



Online Admission 2021



Academic Fees : Session 2021-22

JECRC University

Courses	Tuition Fee	Other Fee	First Year Fee	Total Course Fee	Alumni, Admission Fee One Time, Non Refundable	First Semester + Alumni & Admission Fee at the Time of Admission	Subsequent Semester	Duration of Course (Yr.)
Faculty of Engineering								
B.Tech : CSE, Civil, Electrical, Mechanical, Electronic	1,15,500/-	49,500/-	1,65,000/-	6,60,000/-	10,000/-	92,500/-	82,500/-	4
B.Tech. - CSE : with industry specialization	1,29,500/-	55,500/-	1,85,000/-	7,40,000/-	10,000/-	1,02,500/-	92,500/-	4
M.Tech.	49,000/-	21,000/-	70,000/-	1,40,000/-	10,000/-	45,000/-	35,000/-	2
Faculty of IT & Computer Application								
BCA	58,500/-	31,500/-	90,000/-	2,70,000/-	10,000/-	55,000/-	45,000/-	3
BCA : with industry specialization	71,500/-	38,500/-	1,10,000/-	3,30,000/-	10,000/-	65,000/-	55,000/-	3
MCA	70,000/-	30,000/-	1,00,000/-	2,00,000/-	10,000/-	60,000/-	50,000/-	2
MCA : with industry specialization	84,000/-	36,000/-	1,20,000/-	2,40,000/-	10,000/-	70,000/-	60,000/-	2
Faculty of Management								
BBA	65,000/-	35,000/-	1,00,000/-	3,00,000/-	10,000/-	60,000/-	50,000/-	3
BBA : with industry specialization	78,000/-	42,000/-	1,20,000/-	3,60,000/-	10,000/-	70,000/-	60,000/-	3
BBA-Tourism and Hospitality Management	71,500/-	38,500/-	1,10,000/-	3,30,000/-	10,000/-	65,000/-	55,000/-	3
BBA-Banking Financial Service and Insurance	71,500/-	38,500/-	1,10,000/-	3,30,000/-	10,000/-	65,000/-	55,000/-	3
B.Com	48,750/-	26,250/-	75,000/-	2,25,000/-	10,000/-	47,500/-	37,500/-	3
MBA	87,500/-	37,500/-	1,25,000/-	2,50,000/-	10,000/-	72,500/-	62,500/-	2
MBA : with industry specialization	1,01,500/-	43,500/-	1,45,000/-	2,90,000/-	10,000/-	82,500/-	72,500/-	2
MSW-Human Resource Management & Industrial Relations	56,000/-	24,000/-	80,000/-	1,60,000/-	10,000/-	50,000/-	40,000/-	2
Faculty of Hotel Management								
B.Sc. Hospitality & Hotel Management	48,750/-	31,250/-	80,000/-	2,40,000/-	10,000/-	50,000/-	40,000/-	3
Bachelor of Hotel Management & Catering Technology	66,500/-	33,500/-	1,00,000/-	4,00,000/-	10,000/-	60,000/-	50,000/-	4
Faculty of Journalism & Mass Communication								
BA in Journalism & Mass Communication	58,500/-	36,500/-	95,000/-	2,85,000/-	10,000/-	57,500/-	47,500/-	3
MA in Journalism & Mass Communication	42,000/-	23,000/-	65,000/-	1,30,000/-	10,000/-	42,500/-	32,500/-	2
Faculty of Science								
B.Sc. (Hons.)	48,750/-	26,250/-	75,000/-	2,25,000/-	10,000/-	47,500/-	37,500/-	3
B.Sc. (Hons.) Data Science	45,500/-	24,500/-	70,000/-	2,10,000/-	10,000/-	45,000/-	35,000/-	3
B.Sc. Pass Course	39,000/-	21,000/-	60,000/-	1,80,000/-	10,000/-	40,000/-	30,000/-	3
M.Sc.- Biotech / Microbiology	56,000/-	24,000/-	80,000/-	1,60,000/-	10,000/-	50,000/-	40,000/-	2
M.Sc.- Physics / Chemistry / Mathematics / Statics / Botany / Zoology	45,500/-	19,500/-	65,000/-	1,30,000/-	10,000/-	42,500/-	32,500/-	2
Faculty of Allied Health Sciences								
BPT	42,250/-	22,750/-	65,000/-	2,60,000/-	10,000/-	42,500/-	32,500/-	4
BRIT, BOTT, BMLT	42,250/-	22,750/-	65,000/-	1,95,000/-	10,000/-	42,500/-	32,500/-	3
Faculty of Law								
Integrated Law	70,000/-	35,000/-	1,05,000/-	5,25,000/-	10,000/-	62,500/-	52,500/-	5
LL.M.	49,000/-	26,000/-	75,000/-	1,50,000/-	10,000/-	47,500/-	37,500/-	2
Faculty of Design								
B.Des.-Interior Design, / Jewellery Designing & Manufacturing	77,000/-	38,000/-	1,15,000/-	4,60,000/-	10,000/-	67,500/-	57,500/-	4
Bachelor of Visual Art (BVA) Painting / Graphic Design	56,000/-	29,000/-	85,000/-	3,40,000/-	10,000/-	52,500/-	42,500/-	4
B.Des.- Fashion Design	1,05,000/-	50,000/-	1,55,000/-	6,20,000/-	10,000/-	87,500/-	77,500/-	4
Faculty of Humanities								
BA (Hons.) English, Economics, Psychology, Political Science	39,000/-	26,000/-	65,000/-	1,95,000/-	10,000/-	42,500/-	32,500/-	3
MA English, Economics, Psychology	45,500/-	24,500/-	70,000/-	1,40,000/-	10,000/-	45,000/-	35,000/-	2

Courses	% From	% To	Scholarship % on tuition Fee	Scholarship Amount	First Year Fee After Scholarship	First Semester Fee + Alumni & Admission Fee (At the time of Admission)	Second Semester Fee	Total Course Fee After Scholarship + Alumni & Admission Fee	Duration (Yr.)
B. Tech. - Computer Science & Engineering	70	79.99	20	23100	141900	92500	59400	577600	4
	80	84.99	25	28875	136125	92500	53625	554500	4
	85	89.99	35	40425	124575	92500	42075	508300	4
	90	100	50	57750	107250	92500	24750	439000	4
B.Tech-CSE: Industry Specializations	70	79.99	20	25900	159100	102500	66600	646400	4
	80	84.99	25	32375	152625	102500	60125	620500	4
	85	89.99	35	45325	139675	102500	47175	568700	4
	90	100	50	64750	120250	102500	27750	491000	4
BCA	65	74.99	20	11700	78300	55000	33300	244900	3
	75	100	30	17550	72450	55000	27450	227350	3
BCA: Industry Specializations	65	74.99	20	14300	95700	65000	40700	297100	3
	75	100	30	21450	88550	65000	33550	275650	3
BBA	65	74.99	20	13000	87000	60000	37000	271000	3
	75	100	30	19500	80500	60000	30500	251500	3
BBA-Tourism / BFSI	65	74.99	20	14300	95700	65000	40700	297100	3
	75	100	30	21450	88550	65000	33550	275650	3
BBA: Industry Specializations	65	74.99	20	15600	104400	70000	44400	323200	3
	75	100	30	23400	96600	70000	36600	299800	3
B.Com / B.Sc. (Hons.)	65	74.99	20	9750	65250	47500	27750	205750	3
	75	100	30	14625	60375	47500	22875	191125	3
B.Sc. (Hons.) - Data Science	65	74.99	20	9100	60900	45000	25900	192700	3
	75	100	30	13650	56350	45000	21350	179050	3
BHMCT	65	74.99	20	13300	86700	60000	36700	356800	4
	75	100	30	19950	80050	60000	30050	330200	4
B.Sc. Hotel Management	65	74.99	20	9750	70250	50000	30250	220750	3
	75	100	30	14625	65375	50000	25375	206125	3
Journalism	65	74.99	20	11700	83300	57500	35800	259900	3
	75	100	30	17550	77450	57500	29950	242350	3
BPT	65	74.99	20	8450	56550	42500	24050	236200	4
	75	100	30	12675	52325	42500	19825	219300	4
BMLT / BRIT/ BOTT	65	74.99	20	8450	56550	42500	24050	179650	3
	75	100	30	12675	52325	42500	19825	166975	3
Integrated Law	65	74.99	20	14000	86000	60000	36000	440000	5
	75	100	30	21000	79000	60000	29000	405000	5
B.Des.- Interior / Jewellery Design	65	74.99	20	15400	99600	67500	42100	408400	4
	75	100	30	23100	91900	67500	34400	377600	4
BVA- Painting / Graphic	65	74.99	20	11200	73800	52500	31300	305200	4
	75	100	30	16800	68200	52500	25700	302800	4
B.Des.- Fashion Design	65	74.99	20	21000	134000	87500	56500	546000	4
	75	100	30	31500	123500	87500	46000	504000	4
BA (Hons.)	65	74.99	20	7800	57200	42500	24700	181600	3
	75	100	30	11700	53300	42500	20800	169900	3
B.Sc. (Pass Course)	65	74.99	20	7800	52200	40000	22200	166600	3
	75	100	30	11700	48300	40000	18300	154900	3
*B.Tech. - Civil, Electrical, Mechanical , Electronics & Comm.	* Freeship of 50% of tuition fee shall be given to students have more than 60% marks in qualifying exam in the program.				107250	63625	53625	439000	4

One Time Alumni and Admission Fee: Rs. 10000/- (Non Refundable)

Norms for Renewal of Scholarship

Such students shall be required to maintain a minimum CGPA (SGPA in 1st Semester) 8.00 in the first and subsequent semesters without having any compartment in any subjects & minimum 75% attendance in each subject, failing which the scholarships awarded shall be withdrawn.

JECRC University

Admission Withdrawal Policy Refund Rules

Ready Reckoner for Refund – (A) Academic Fees

If a student chooses to withdraw from the program of study to which he/she is enrolled, the University shall follow the following five tier system for the refund of fees remitted by the student.

S. No.	Point of time when notice of withdrawal of Admission	Deduction to be made
1	16 days or more before the date of commencement of classes	Rs. 5000/-
2	Within 15 days from the date of commencement of classes	10% of annual fees*
3	Upto 15 days after the date of commencement of classes	20% of annual fees*
4	More than 15 days but less than 30 days after date of commencement of classes	50% of annual fees*
5	After 30 days of the date of commencement of classes	No Refund

*(Inclusive of course fees and non-tuition fees)

Ready Reckoner for Refund – (B) Bus Fees

If a student chooses to withdraw from the Bus, the University shall follow the following five tier system for the refund of fees remitted by the student.

S. No.	Point of time when notice of withdrawal of Admission	Deduction to be made
1		Rs. 2500/-
2	Within 15 days from the date of commencement of classes	Rs. 3000/-
3	Upto 15 days after the date of commencement of classes	Rs. 6000/-
4	More than 15 days but less than 30 days after date of commencement of classes	Rs. 15000/-
5	After 30 days of the date of commencement of classes	No Refund

Ready Reckoner for Refund – (C) Hostel Fees

If a student chooses to withdraw from the Hostel, the University shall follow the following five tier system for the refund of fees remitted by the student.

S. No.	Point of time when notice of withdrawal of Admission	Deduction to be made
1	16 days or more before the date of commencement of classes	Rs. 5000/-
2	Within 15 days from the date of commencement of classes	10% of annual fees
3	Upto 15 days after the date of commencement of classes	20% of annual fees
4	More than 15 days but less than 30 days after date of commencement of classes	50% of annual fees
5	After 30 days of the date of commencement of classes	No Refund

Build
— your —
WORLD



#beaJECRCian



Plot No. IS-2036 to 2039, Ramchandrapura Industrial
Area, Vidhani, Jaipur, Rajasthan-303905

✉ admission@jecrcu.edu.in jecrcuniversity.edu.in

Toll Free No. 1800 120 5616 | follow us on [f](#) [v](#)